

**INSTRUMENT
APPROACH
CHART - ICAO**

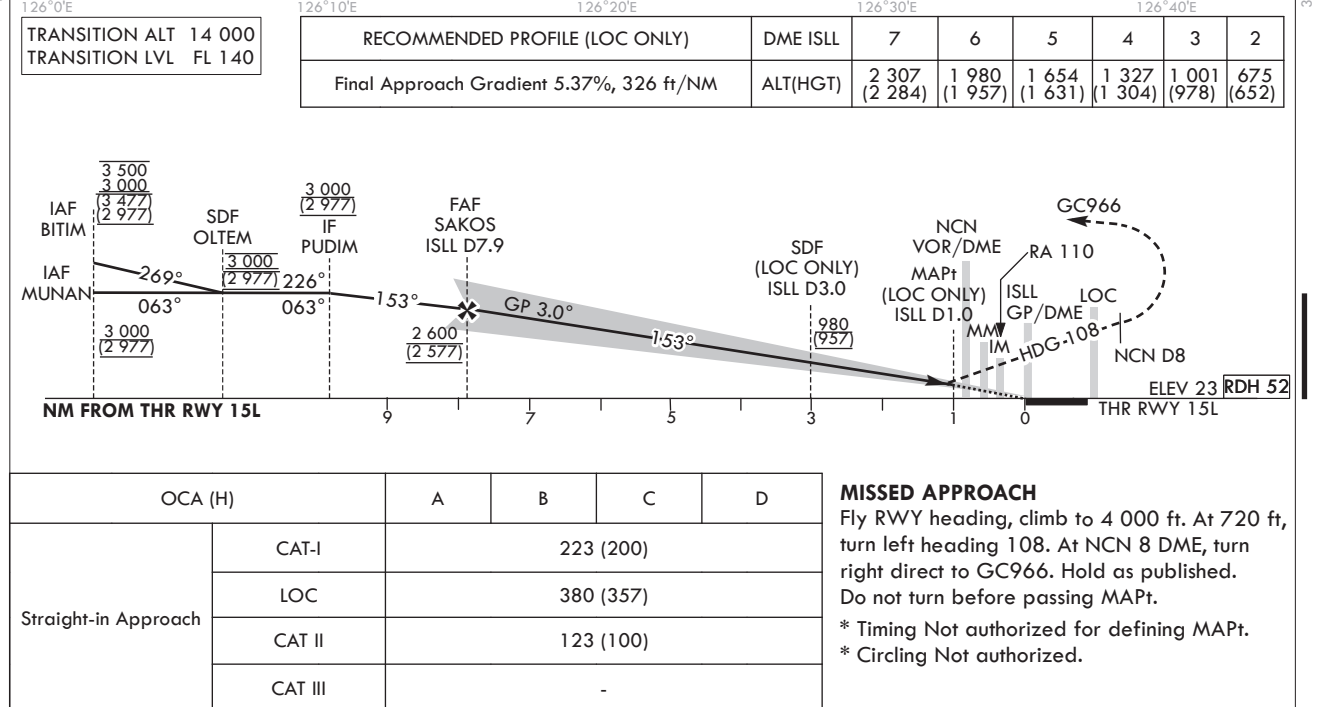
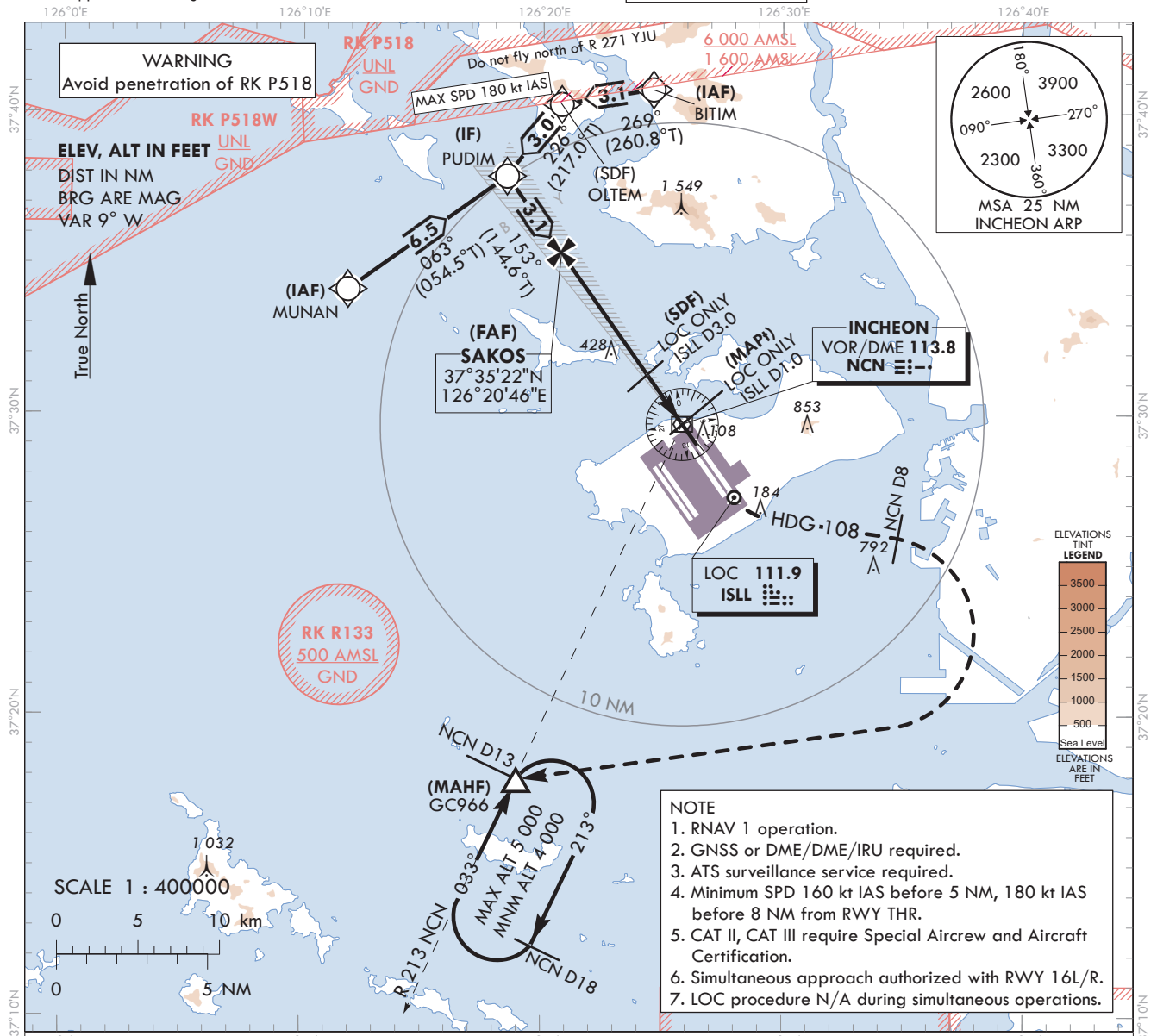
Note : Approach ICAO Flight Procedures.

AERODROME ELEV 23 ft
HEIGHTS RELATED TO
THR RWY 15L - ELEV 23 ft

SEOUL	APP	119.75
		121.35
INCHEON	TWR	118.2
		118.8

SEOUL/Incheon Intl(RKSI)

ILS Z or LOC Z RWY 15L
CAT II & III



Change : Information of profile view.

SEOUL/Incheon Intl(RKSI)
ILS Z or LOC Z RWY 15L
CAT II & III

AERONAUTICAL DATA TABULATION

ILS Z/LOC Z Approach to RWY 15L from MUNAN to PUDIM(IF)	
Fix / Point	Coordinates
MUNAN(IAF)	37°34'09.3"N 126°11'53.0"E
PUDIM(IF)	37°37'54.2"N 126°18'30.0"E

ILS Z/LOC Z Approach to RWY 15L from BITIM to PUDIM(IF)	
Fix / Point	Coordinates
BITIM(IAF)	37°40'48.0"N 126°24'36.1"E
OLTEM(SDF)	37°40'18.2"N 126°20'46.3"E
PUDIM(IF)	37°37'54.2"N 126°18'30.0"E

ILS Z/LOC Z Approach to RWY 15L from PUDIM(IF) to MAHF	
Fix / Point	Coordinates
SAKOS(FAF) BRG 153.15°/7.92 NM ISLL	37°35'22.4"N 126°20'45.7"E
D3.0 ISLL(SDF) (LOC ONLY) BRG 153.15°/3.00 NM ISLL	37°31'21.2"N 126°24'20.8"E
D1.0 ISLL(MAPt) (LOC ONLY) BRG 153.15°/1.00 NM ISLL	37°29'43.1"N 126°25'48.2"E
NCN VOR/DME	37°29'41.7"N 126°25'49.2"E
THR RWY 15L	37°29'02.20"N 126°26'24.56"E
ISLL DME	37°28'56.4"N 126°26'35.6"E
Climb to 720 ft HDG 153	-
D8 NCN HDG 108	-
GC966 BRG 213.08°/13.00 NM NCN	37°17'53.0"N 126°18'58.0"E

**INSTRUMENT
APPROACH
CHART - ICAO**

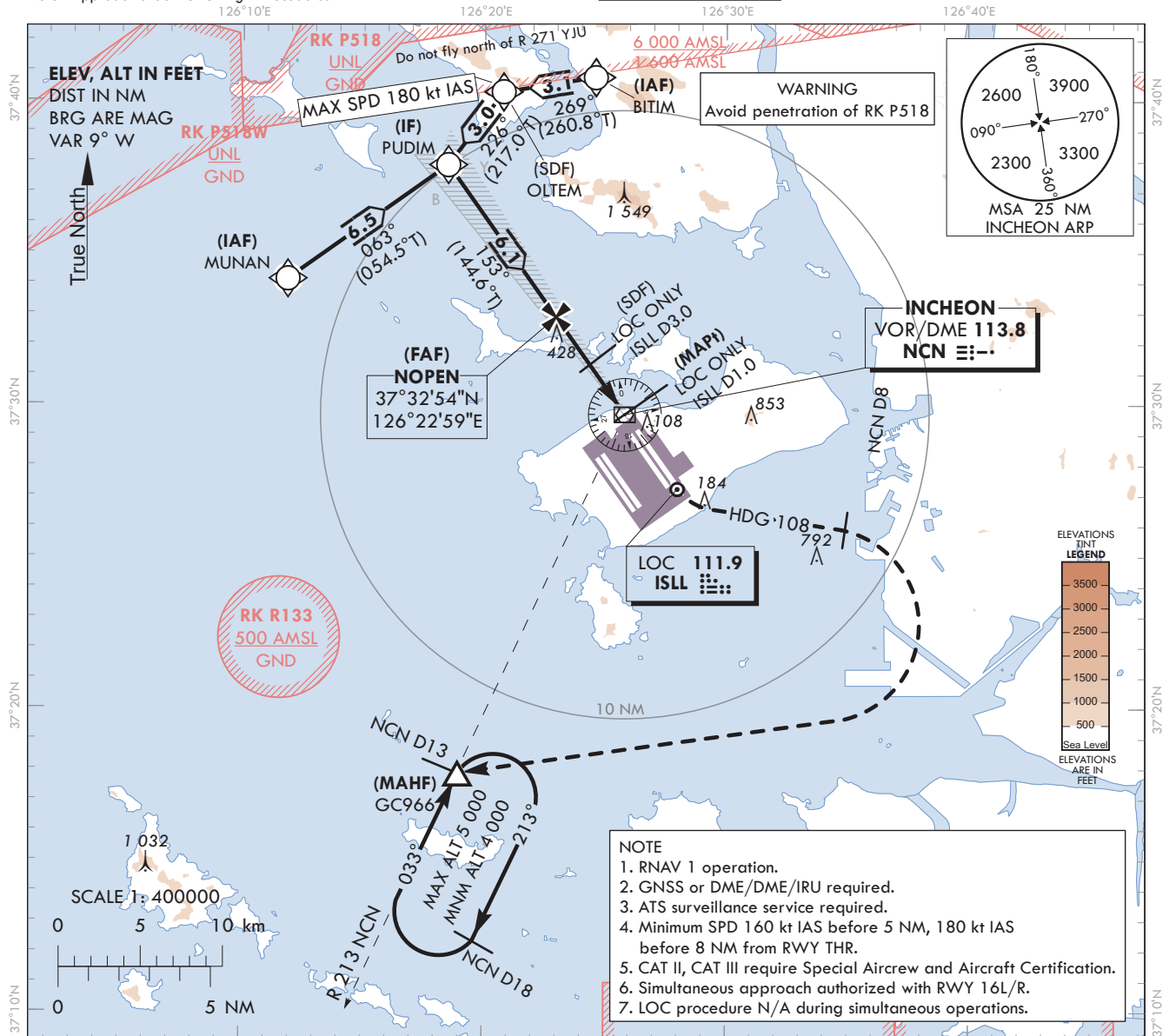
AERODROME ELEV 23 ft
HEIGHTS RELATED TO
THR RWY 15L - ELEV 23 ft

SEOUL APP 119.75
121.35
INCHEON TWR 118.2
118.8

SEOUL/Incheon Intl(RKSI)

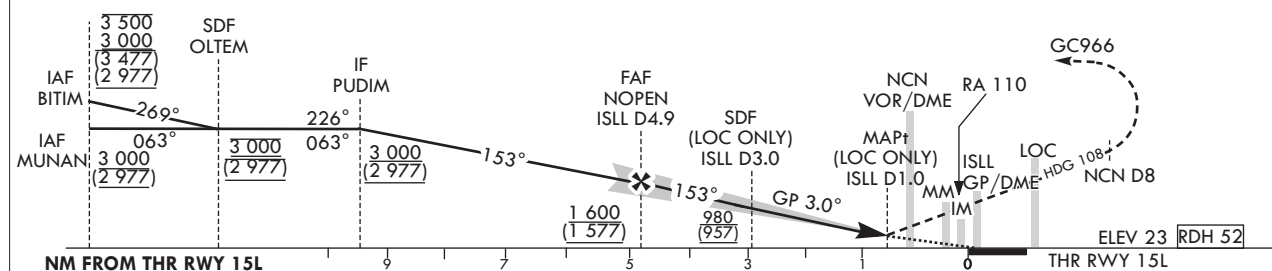
**ILS Y or LOC Y RWY 15L
CAT II & III**

Note : Approach under ICAO Flight Procedures.



TRANSITION ALT 14 000
TRANSITION LVL FL 140

RECOMMENDED PROFILE (LOC ONLY)		4	3	2
Final Approach Gradient 5.30%, 322 ft/NM	DME ISLL	1 311 (1 288)	989 (966)	667 (644)



OCA (H)		A	B	C	D
Straight-in Approach	CAT-I	223 (200)			
	LOC	380 (357)			
	CAT II	123 (100)			
	CAT III	-			

MISSED APPROACH

Fly RWY heading, climb to 4 000 ft. At 720 ft, turn left heading 108. At NCN 8 DME, turn right direct to GC966. Hold as published.
Do not turn before passing MAPt.
* Timing Not authorized for defining MAPt.
* Circling Not authorized.

Change : Information of profile view.

SEOUL/Incheon Intl(RKSI)
ILS Y or LOC Y RWY 15L
CAT II & III

AERONAUTICAL DATA TABULATION

ILS Y/LOC Y Approach to RWY 15L from MUNAN to PUDIM(IF)	
Fix / Point	Coordinates
MUNAN(IAF)	37°34'09.3"N 126°11'53.0"E
PUDIM(IF)	37°37'54.2"N 126°18'30.0"E

ILS Y/LOC Y Approach to RWY 15L from BITIM to PUDIM(IF)	
Fix / Point	Coordinates
BITIM(IAF)	37°40'48.0"N 126°24'36.1"E
OLTEM(SDF)	37°40'18.2"N 126°20'46.3"E
PUDIM(IF)	37°37'54.2"N 126°18'30.0"E

ILS Y/LOC Y Approach to RWY 15L from PUDIM(IF) to MAHF	
Fix / Point	Coordinates
NOPEN(FAF) BRG 153.15°/4.89 NM ISLL	37°32'53.5"N 126°22'58.5"E
D3.0 ISLL (SDF LOC ONLY) BRG 153.15°/3.00 NM ISLL	37°31'21.2"N 126°24'20.8"E
D1.0 ISLL (MAPt LOC ONLY) BRG 153.15°/1.00 NM ISLL	37°29'43.1"N 126°25'48.2"E
NCN VOR/DME	37°29'41.7"N 126°25'49.2"E
THR RWY 15L	37°29'02.20"N 126°26'24.56"E
ISLL DME	37°28'56.4"N 126°26'35.6"E
Climb to 720 ft HDG 153	-
D8 NCN HDG 108	-
GC966 BRG 213.08°/13.00 NM NCN	37°17'53.0"N 126°18'58.0"E

**INSTRUMENT
APPROACH
CHART - ICAO**

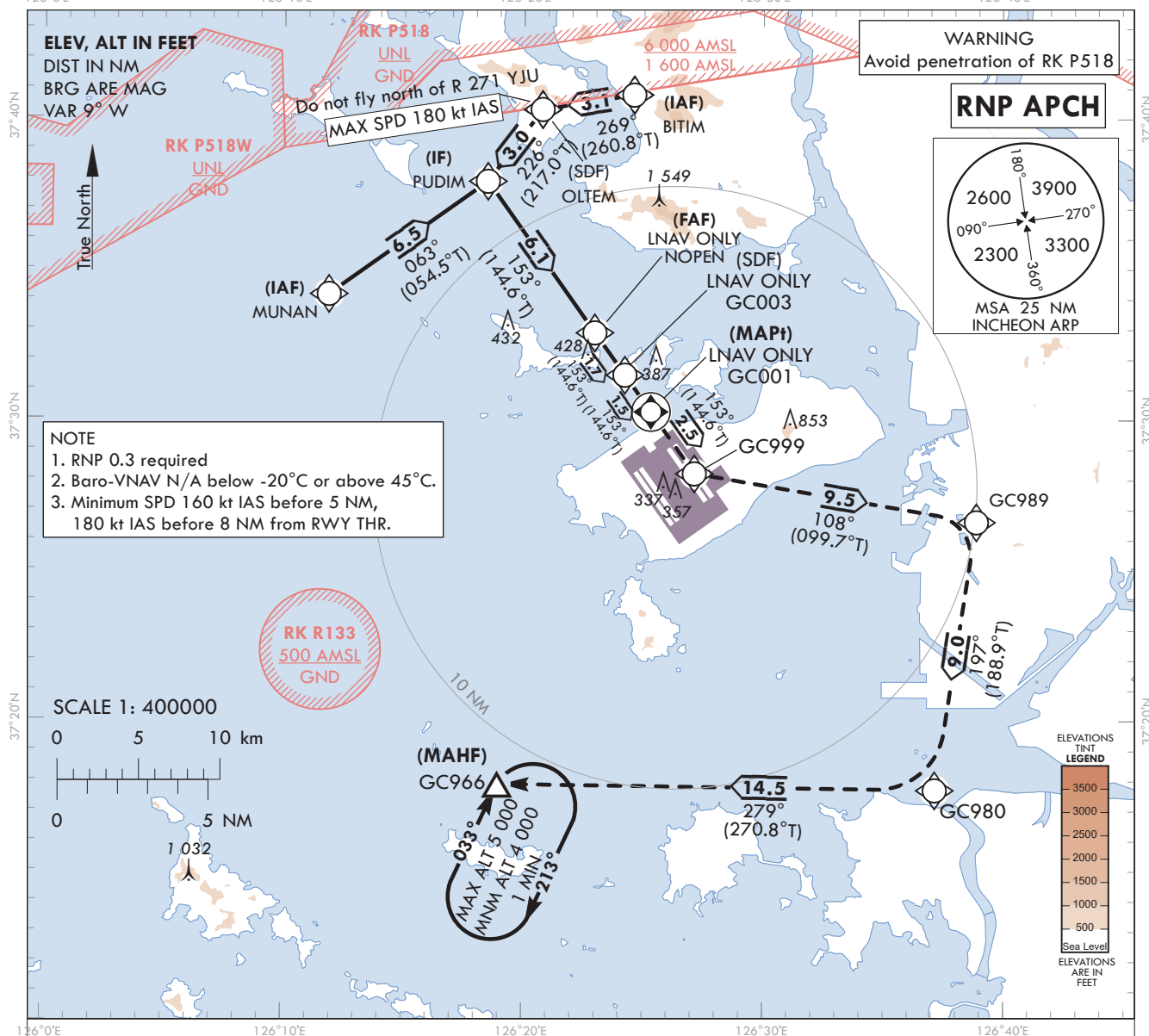
Note : Approach under ICAO Flight Procedures.

AERODROME ELEV 23 ft
HEIGHTS RELATED TO
THR RWY 15L - ELEV 23 ft

SEOUL APP 119.75
121.35
INCHEON TWR 118.2
118.8

SEOUL/Incheon Intl(RKSI)

RNP RWY 15L



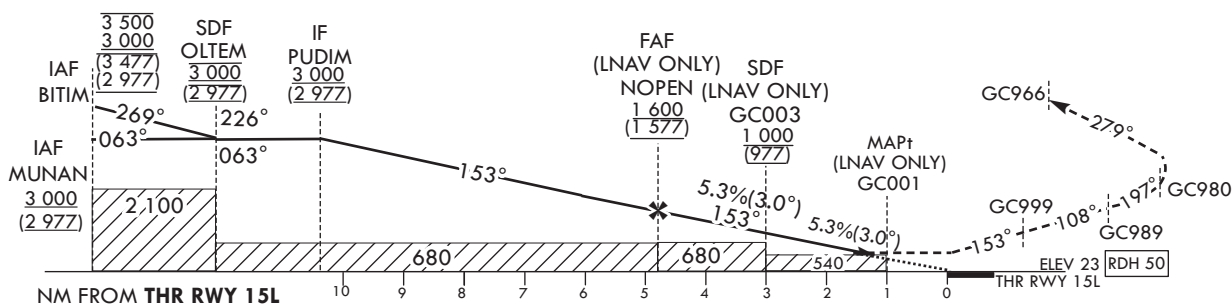
TRANSITION ALT 14 000
TRANSITION LVL FL 140

MISSED APPROACH

Climb to 4 000 ft. Track to GC999, GC989, GC980 and GC966. Hold as published.

NOTE

1. Missed approach turn limited to 210 kt IAS maximum at GC999 and GC989.



OCA (H)		A	B	C	D		Knots	60	90	120	150	180
Straight-in Approach	LNAV/VNAV	460 (437)				Rate of descent	V/V fpm	324	485	647	809	971
	LNAV	540 (517)				* Timing Not authorized for defining MAPt. * Circling Not authorized.						

SEOUL/Incheon Intl(RKSI)
RNP RWY 15L

AERONAUTICAL DATA TABULATION

Instrument Approach Procedure Coding Tables

RNP RWY 15L - via MUNAN(IAF) to GC966(MAHF)

Serial Number	Path Descriptor	Waypoint Identifier	Fly-over	Course/Track °M(°T)	Distance (NM)	Turn direction	Altitude (ft)	Speed (kt)	Coordinates	VPA/RDH	Navigation specification	Remarks
001	IF	MUNAN	-	-	-	-	+3 000	-	37°34'09.3"N 126°11'53.0"E	-	RNP APCH	IAF
002	TF	PUDIM	-	063 (054.5)	6.5	-	+3 000	-	37°37'54.2"N 126°18'30.0"E	-	RNP APCH	IF
003	TF	NOPEM	-	153 (144.6)	6.1	-	+1 600	-	37°32'53.5"N 126°22'58.5"E	-	RNP APCH	FAF
004	TF	GC003	-	153 (144.6)	1.7	-	+1 000	-	37°31'29.2"N 126°24'13.7"E	-	RNP APCH	SDF
005	TF	GC001	Y	153 (144.6)	1.5	-	+540	-	37°30'15.70"N 126°25'19.14"E	-3.05/50	RNP APCH	MAPt
006	TF	GC999	-	153 (144.6)	2.5	-	-	-210	37°28'13.2"N 126°27'08.2"E	-	RNP APCH	-
007	TF	GC989	-	108 (099.7)	9.5	-	-	-210	37°26'36.8"N 126°38'53.7"E	-	RNP APCH	-
008	TF	GC980	-	197 (188.9)	9.0	-	-	-	37°17'42.5"N 126°37'09.6"E	-	RNP APCH	-
009	TF	GC966	-	279 (270.8)	14.5	-	+4 000	-	37°17'53.0"N 126°18'58.0"E	-	RNP APCH	-
010	HM	GC966	Y	033 (024.8)	-	R	-5 000 +4 000	-	37°17'53.0"N 126°18'58.0"E	-	RNP APCH	1 min (Outbound timing)

RNP RWY 15L - via BITIM(IAF) to GC966(MAHF)

Serial Number	Path Descriptor	Waypoint Identifier	Fly-over	Course/Track °M(°T)	Distance (NM)	Turn direction	Altitude (ft)	Speed (kt)	Coordinates	VPA/RDH	Navigation specification	Remarks
001	IF	BITIM	-	-	-	-	-3 500 +3 000	-	37°40'48.0"N 126°24'36.1"E	-	RNP APCH	IAF
002	TF	OLTEM	-	269 (260.8)	3.1	-	@3 000	-180	37°40'18.2"N 126°20'46.3"E	-	RNP APCH	SDF
003	TF	PUDIM	-	226 (217.0)	3.0	-	+3 000	-	37°37'54.2"N 126°18'30.0"E	-	RNP APCH	IF
004	TF	NOPEM	-	153 (144.6)	6.1	-	+1 600	-	37°32'53.5"N 126°22'58.5"E	-	RNP APCH	FAF
005	TF	GC003	-	153 (144.6)	1.7	-	+1 000	-	37°31'29.2"N 126°24'13.7"E	-	RNP APCH	SDF
006	TF	GC001	Y	153 (144.6)	1.5	-	+540	-	37°30'15.70"N 126°25'19.14"E	-3.05/50	RNP APCH	MAPt
007	TF	GC999	-	153 (144.6)	2.5	-	-	-210	37°28'13.2"N 126°27'08.2"E	-	RNP APCH	-
008	TF	GC989	-	108 (099.7)	9.5	-	-	-210	37°26'36.8"N 126°38'53.7"E	-	RNP APCH	-
009	TF	GC980	-	197 (188.9)	9.0	-	-	-	37°17'42.5"N 126°37'09.6"E	-	RNP APCH	-
010	TF	GC966	-	279 (270.8)	14.5	-	+4 000	-	37°17'53.0"N 126°18'58.0"E	-	RNP APCH	-
011	HM	GC966	Y	033 (024.8)	-	R	-5 000 +4 000	-	37°17'53.0"N 126°18'58.0"E	-	RNP APCH	1 min (Outbound timing)

**INSTRUMENT
APPROACH
CHART - ICAO**

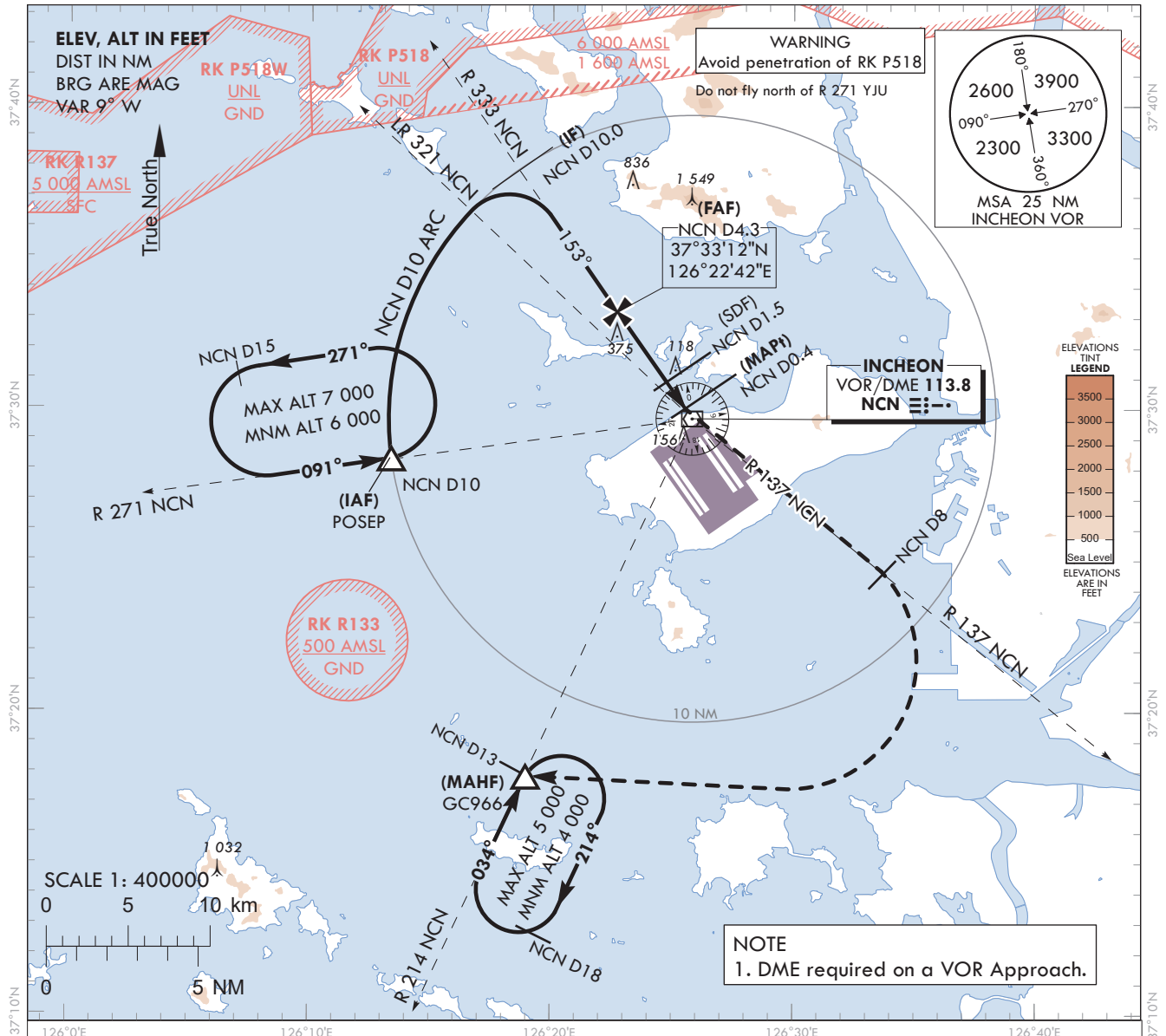
Note : Approach under ICAO Flight Procedures.
126°0'E 126°10'E 126°20'E 126°30'E 126°40'E

AERODROME ELEV 23 ft
HEIGHTS RELATED TO
THR RWY 15L - ELEV 23 ft

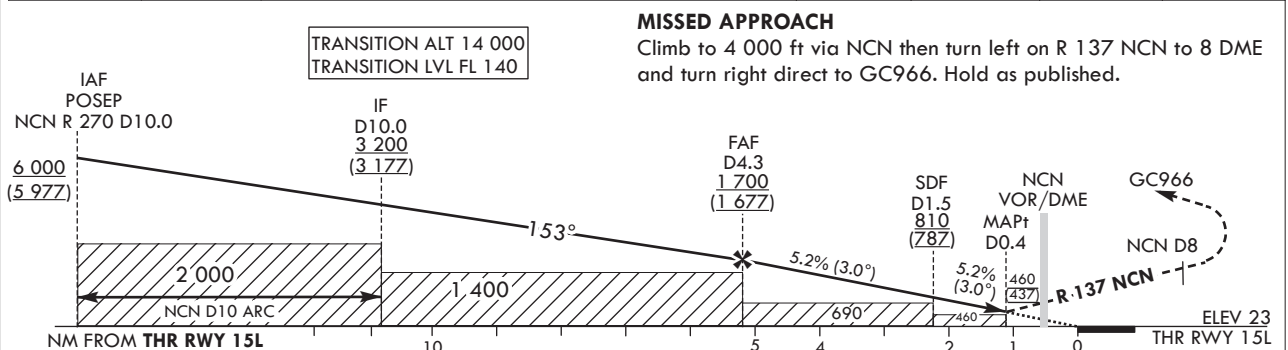
SEOUL APP 119.75
121.35
INCHEON TWR 118.2
118.8

SEOUL/Incheon Intl(RKSI)

VOR RWY 15L



RECOMMENDED DESCENT PROFILE	DME NCN	3	2	1
Final Approach Gradient 5.2%(317.9 ft/NM) to SDF, 5.2%(318.3 ft/NM) to THR	ALT(HGT)	1 287(1 264)	969(946)	650(627)



OCA (H)	A	B	C	D		Knots	60	90	120	150	180
Straight-in Approach	460 (437)				Rate of descent	V/V fpm	318	477	636	795	954
					* Timing Not authorized for defining MAPt. * Circling Not authorized.						

* Timing Not authorized for defining MAPt.
* Circling Not authorized.

Change : Amended chart symbol.

AERONAUTICAL DATA TABULATION

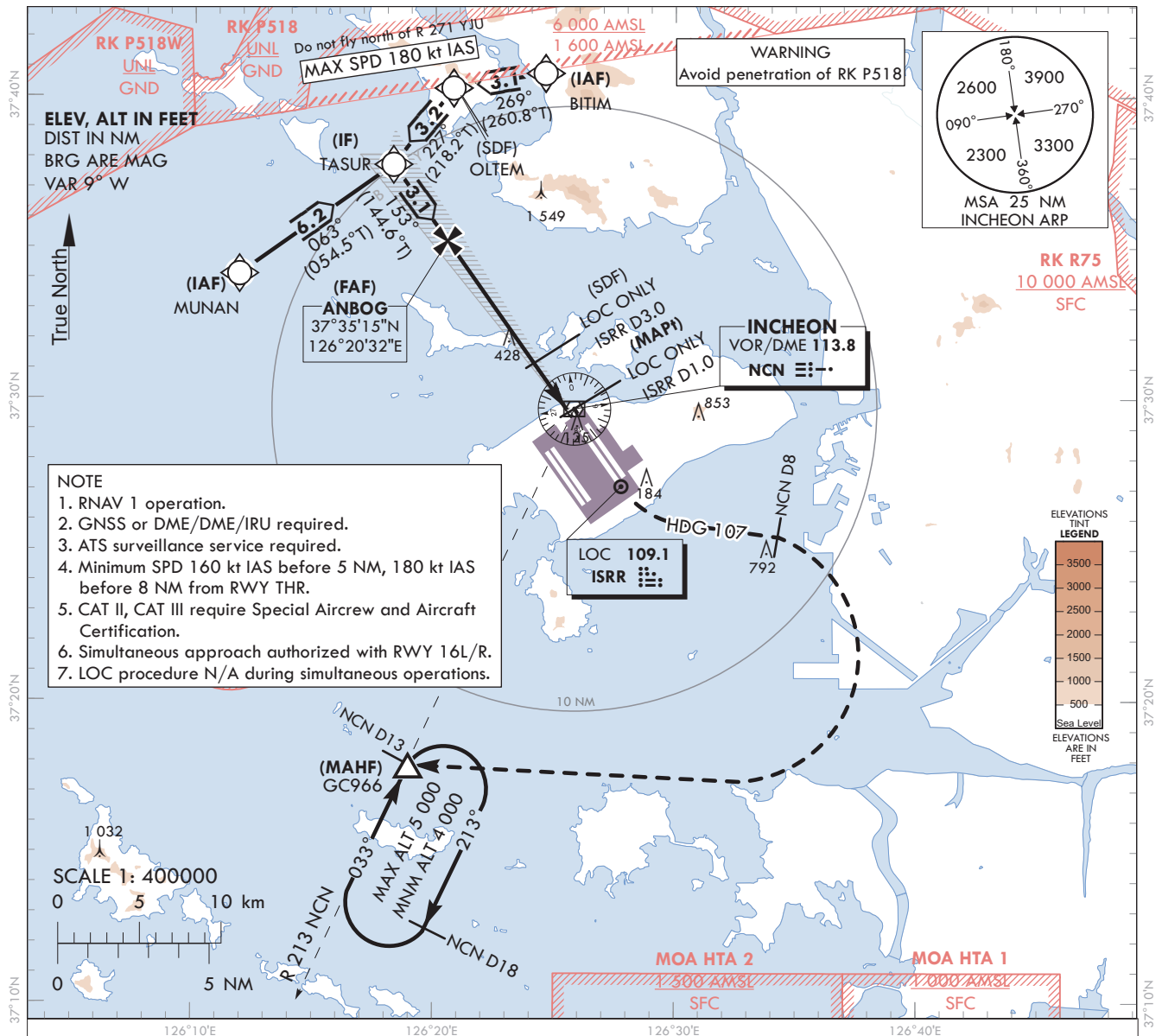
VOR Approach to RWY 15L from POSEP			
Fix / Point		Coordinates	
POSEP(IAF)		37°28'21.8"N	126°13'22.0"E
D10 NCN(IF)	BRG 153.45°/10.00 NM NCN	37°37'52.4"N	126°18'33.7"E
D4.3 NCN(FAF)	BRG 153.45°/4.30 NM NCN	37°33'12.4"N	126°22'42.4"E
D1.5 NCN(SDF)	BRG 153.45°/1.50 NM NCN	37°30'55.0"N	126°24'44.2"E
D0.4 NCN(MAPt)	BRG 153.45°/0.40 NM NCN	37°30'01.0"N	126°25'32.1"E
NCN VOR/DME		37°29'41.7"N	126°25'49.2"E
THR RWY 15L	Final approach descent angle 2.99°(FAF - SDF)/3.00°(SDF - THR)	37°29'02.20"N	126°26'24.56"E
D8 NCN	R 137 NCN/8.00 NM NCN	37°24'40.1"N	126°33'39.1"E
GC966	BRG 213.53°/13.00 NM NCN	37°17'53.0"N	126°18'58.0"E

AERODROME ELEV 23 ft
HEIGHTS RELATED TO
THR RWY 15R - ELEV **23 ft**

Note : Approach under ICAO Flight Procedures.

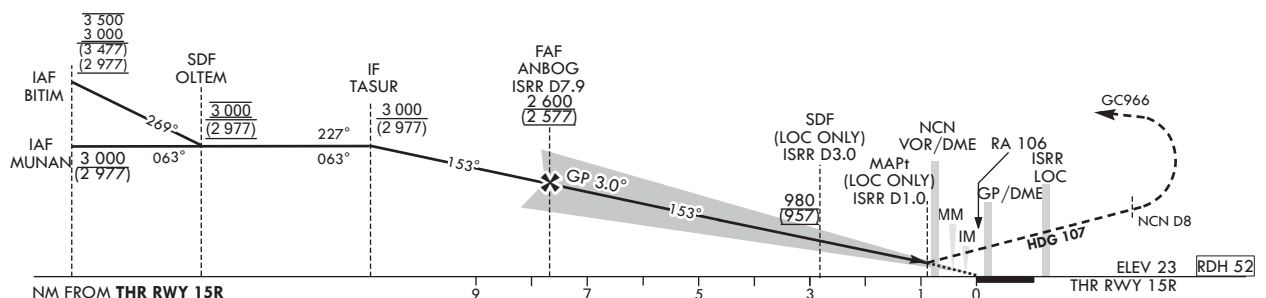
SEOUL	APP	119.75
		121.35
INCHEON	TWR	118.2
		118.8

CAT II & III



TRANSITION ALT 14 000
TRANSITION LVL FL 140

RECOMMENDED PROFILE (LOC ONLY)	DME ISRR	7	6	5	4	3	2
Final Approach Gradient 5.37%, 326 ft/NM	ALT(HGT)	2 307 (2 284)	1 980 (1 957)	1 654 (1 631)	1 327 (1 304)	1 001 (978)	675 (652)



OCA (H)		A	B	C	D
Straight-in Approach	CAT-I	223 (200)			
	LOC	380 (357)			
	CAT II	123 (100)			
	CAT III	-			

Fly RWY heading climb to 4 000 ft. At 720 ft, turn left heading 107. At NCN 8 DME, turn right direct to GC966. Hold as published. Do not turn before passing MAPt.

- * Timing Not authorized for defining MAPt.
- * Circling Not authorized.

Change : Amended chart symbol.

SEOUL/Incheon Intl(RKSI)
ILS Z or LOC Z RWY 15R
CAT II & III

AERONAUTICAL DATA TABULATION

ILS Z/LOC Z Approach to RWY 15R from MUNAN to TASUR(IF)	
Fix / Point	Coordinates
MUNAN(IAF)	37°34'09.3"N 126°11'53.0"E
TASUR(IF)	37°37'46.4"N 126°18'16.2"E

ILS Z/LOC Z Approach to RWY 15R from BITIM to TASUR(IF)	
Fix / Point	Coordinates
BITIM(IAF)	37°40'48.0"N 126°24'36.1"E
OLTEM(SDF)	37°40'18.2"N 126°20'46.3"E
TASUR(IF)	37°37'46.4"N 126°18'16.2"E

ILS Z/LOC Z Approach to RWY 15R from TASUR(IF) to MAHF	
Fix / Point	Coordinates
ANBOG(FAF) BRG 153.15°/7.92 NM ISRR	37°35'14.6"N 126°20'31.9"E
D3.0 ISRR (SDF LOC ONLY) BRG 153.15°/3.00 NM ISRR	37°31'13.4"N 126°24'07.1"E
D1.0 ISRR (MAPt LOC ONLY) BRG 153.15°/1.00 NM ISRR	37°29'35.4"N 126°25'34.4"E
NCN VOR/DME	37°29'41.7"N 126°25'49.2"E
THR RWY 15R	37°28'54.44"N 126°26'10.82"E
ISRR DME	37°28'48.7"N 126°26'21.9"E
Climb to 720 ft HDG 153	-
D8 NCN HDG 107	-
GC966 BRG 213.08°/13.00 NM NCN	37°17'53.0"N 126°18'58.0"E

**INSTRUMENT
APPROACH
CHART - ICAO**

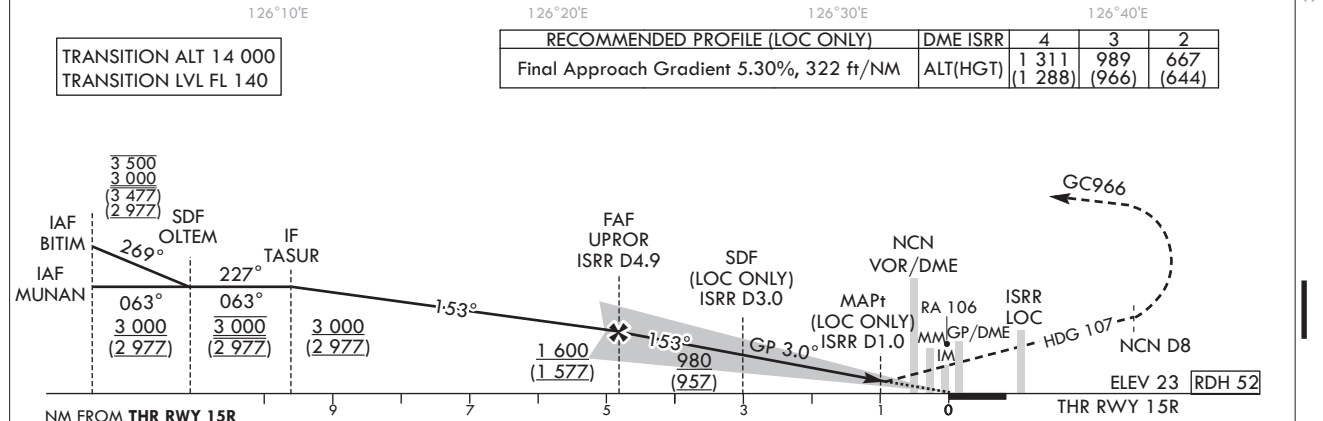
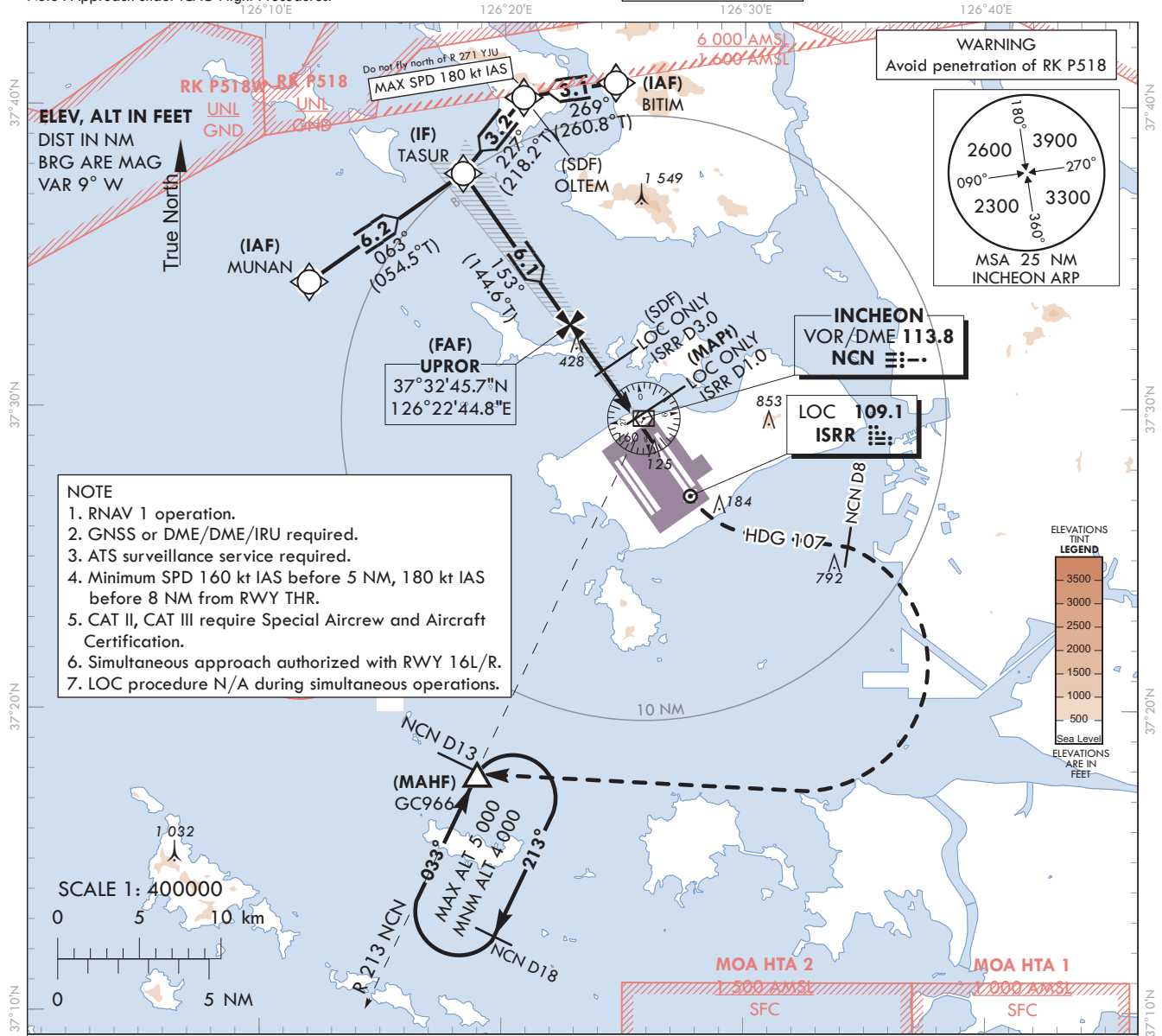
AERODROME ELEV 23 ft
HEIGHTS RELATED TO
THR RWY 15R - ELEV 23 ft

SEOUL APP 119.75
121.35
INCHEON TWR 118.2
118.8

SEOUL/Incheon Intl(RKSI)

ILS Y or LOC Y RWY 15R
CAT II & III

Note : Approach under ICAO Flight Procedures.



OCA (H)		A	B	C	D
Straight-in Approach	CAT-I	223 (200)			
	LOC	380 (357)			
	CAT II	123 (100)			
	CAT III	-			

MISSED APPROACH
Fly RWY heading, climb to 4 000 ft. At 720 ft, turn left heading 107. At NCN 8 DME, turn right direct to GC966. Hold as published. Do not turn before passing MAPt.
* Timing Not authorized for defining MAPt.
* Circling Not authorized.

Change : Information of profile view.

SEOUL/Incheon Intl(RKSI)
ILS Y or LOC Y RWY 15R
CAT II & III

AERONAUTICAL DATA TABULATION

ILS Y/LOC Y Approach to RWY 15R from MUNAN to TASUR(IF)	
Fix / Point	Coordinates
MUNAN(IAF)	37°34'09.3"N 126°11'53.0"E
TASUR(IF)	37°37'46.4"N 126°18'16.2"E

ILS Y/LOC Y Approach to RWY 15R from BITIM to TASUR(IF)	
Fix / Point	Coordinates
BITIM(IAF)	37°40'48.0"N 126°24'36.1"E
OLTEM(SDF)	37°40'18.2"N 126°20'46.3"E
TASUR(IF)	37°37'46.4"N 126°18'16.2"E

ILS Y/LOC Y Approach to RWY 15R from TASUR(IF) to MAHF	
Fix / Point	Coordinates
UPROR(FAF) BRG 153.15°/4.89 NM ISRR	37°32'45.7"N 126°22'44.8"E
D3.0 ISRR (SDF LOC ONLY) BRG 153.15°/3.00 NM ISRR	37°31'13.4"N 126°24'07.1"E
D1.0 ISRR (MAPt LOC ONLY) BRG 153.15°/1.00 NM ISRR	37°29'35.4"N 126°25'34.4"E
NCN VOR/DME	37°29'41.7"N 126°25'49.2"E
THR RWY 15R	37°28'54.44"N 126°26'10.82"E
ISRR DME	37°28'48.7"N 126°26'21.9"E
Climb to 720 ft HDG 153	-
D8 NCN HDG 107	-
GC966 BRG 213.08°/13.00 NM NCN	37°17'53.0"N 126°18'58.0"E

**INSTRUMENT
APPROACH
CHART - ICAO**

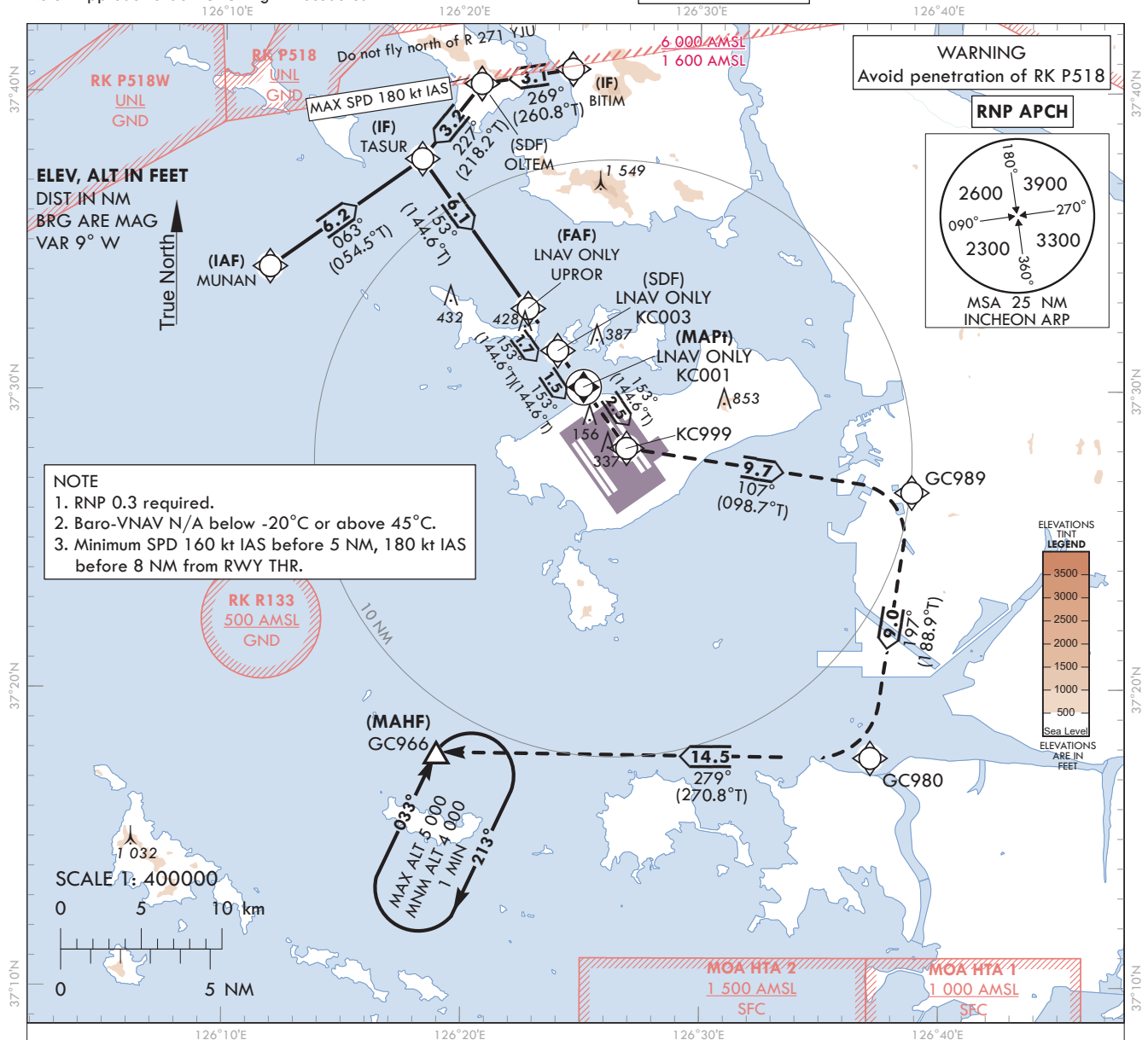
AERODROME ELEV 23 ft
HEIGHTS RELATED TO
THR RWY 15R - ELEV 23 ft

SEOUL APP 119.75
121.35
INCHEON TWR 118.2
118.8

SEOUL/Incheon Intl(RKSI)

RNP RWY 15R

Note : Approach under ICAO Flight Procedures.



TRANSITION ALT 14 000
TRANSITION LVL FL 140

MISSED APPROACH

Climb to 4 000 ft. Track to KC999, GC989, GC980 and GC966. Hold as published.

NOTE

1. Missed approach turn limited to 210 kt IAS maximum at KC999 and GC989.

The chart illustrates the missed approach procedure for THR RWY 15R. Key elements include:

- Waypoints and Altitudes:**
 - IAF BITIM: 3 500, 3 000, (3 477), (2 977)
 - IAF MUNAN: 3 000, (2 977)
 - SDF OLTEM: 3 000, (2 977)
 - IF TASUR: 3 000, (2 977)
 - FAF (LNAV ONLY) UPROR: (1 577)
 - SDF (LNAV ONLY) KC003: 1 600, (1 577)
 - MAPt (LNAV ONLY) KC001: 1 000, (977)
- Distances (NM FROM THR RWY 15R):** 2 100, 700, 700, 690, 540, 0.
- Angles:** 269°, 063°, 227°, 063°, 153°, 5.3% (3.0%), 153°, 107°, 197°, 279°.
- Obstacles:** Shaded areas indicate obstacle clearance. Specific obstacle heights are 690 and 540.
- Final Segment:** ELEV 23, RDH 50, THR RWY 15R.

OCA (H)		A	B	C	D	Knots		60	90	120	150	180
Straight-in Approach	LNAV/VNAV	460 (437)				Rate of descent	V/V fpm	324	485	647	809	971
	LNAV	540 (517)						* Timing Not authorized for defining MAPt. * Circling Not authorized.				

Change : Amended chart symbol.

AERONAUTICAL DATA TABULATION

Instrument Approach Procedure Coding Tables

RNP RWY 15R - via MUNAN(IAF) to GC966(MAHF)

Serial Number	Path Descriptor	Waypoint Identifier	Fly-Over Course/Track °M(°T)	Distance (NM)	Turn direction	Altitude (ft)	Speed (kt)	Coordinates	VPA/RDH	Navigation specification	Remarks
001	IF	MUNAN	-	-	-	+3 000	-	37°34'09.3"N 126°11'53.0"E	-	RNP APCH	IAF
002	TF	TASUR	-	6.2	-	+3 000	-	37°37'46.4"N 126°18'16.2"E	-	RNP APCH	IF
003	TF	UPROR	-	6.1	-	+1 600	-	37°32'45.7"N 126°22'44.8"E	-	RNP APCH	FAF
004	TF	KC003	-	1.7	-	+1 000	-	37°31'21.4"N 126°23'59.9"E	-	RNP APCH	SDF
005	TF	KC001	Y	1.5	-	+540	-	37°30'07.93"N 126°25'05.40"E	-3.05/50	RNP APCH	MAPI
006	TF	KC999	-	2.5	-	-	-210	37°28'05.4"N 126°26'54.4"E	-	RNP APCH	-
007	TF	GC989	-	9.7	-	-	-210	37°26'36.8"N 126°38'53.7"E	-	RNP APCH	-
008	TF	GC980	-	9.0	-	-	-	37°17'42.5"N 126°37'09.6"E	-	RNP APCH	-
009	TF	GC966	-	14.5	-	+4 000	-	37°17'53.0"N 126°18'58.0"E	-	RNP APCH	-
010	HM	GC966	Y	-	R	-5 000 +4 000	-	37°17'53.0"N 126°18'58.0"E	-	RNP APCH	1 min (Outbound timing)

RNP RWY 15R - via BITIM(IAF) to GC966(MAHF)

Serial Number	Path Descriptor	Waypoint Identifier	Fly-Over Course/Track °M(°T)	Distance (NM)	Turn direction	Altitude (ft)	Speed (kt)	Coordinates	VPA/RDH	Navigation specification	Remarks
001	IF	BITIM	-	-	-	-3 500 +3 000	-	37°40'48.0"N 126°24'36.1"E	-	RNP APCH	IAF
002	TF	OLTEM	-	3.1	-	@3 000	-180	37°40'18.2"N 126°20'46.3"E	-	RNP APCH	SDF
003	TF	TASUR	-	3.2	-	+3 000	-	37°37'46.4"N 126°18'16.2"E	-	RNP APCH	IF
004	TF	UPROR	-	6.1	-	+1 600	-	37°32'45.7"N 126°22'44.8"E	-	RNP APCH	FAF
005	TF	KC003	-	1.7	-	+1 000	-	37°31'21.4"N 126°23'59.9"E	-	RNP APCH	SDF
006	TF	KC001	Y	1.5	-	+540	-	37°30'07.93"N 126°25'05.40"E	-3.05/50	RNP APCH	MAPI
007	TF	KC999	-	2.5	-	-	-210	37°28'05.4"N 126°26'54.4"E	-	RNP APCH	-
008	TF	GC989	-	9.7	-	-	-210	37°26'36.8"N 126°38'53.7"E	-	RNP APCH	-
009	TF	GC980	-	9.0	-	-	-	37°17'42.5"N 126°37'09.6"E	-	RNP APCH	-
010	TF	GC966	-	14.5	-	+4 000	-	37°17'53.0"N 126°18'58.0"E	-	RNP APCH	-
011	HM	GC966	Y	-	R	-5 000 +4 000	-	37°17'53.0"N 126°18'58.0"E	-	RNP APCH	1 min (Outbound timing)

AERODROME ELEV 23 ft
HEIGHTS ELEV TO
THR RWY 16L - ELEV 23 ft

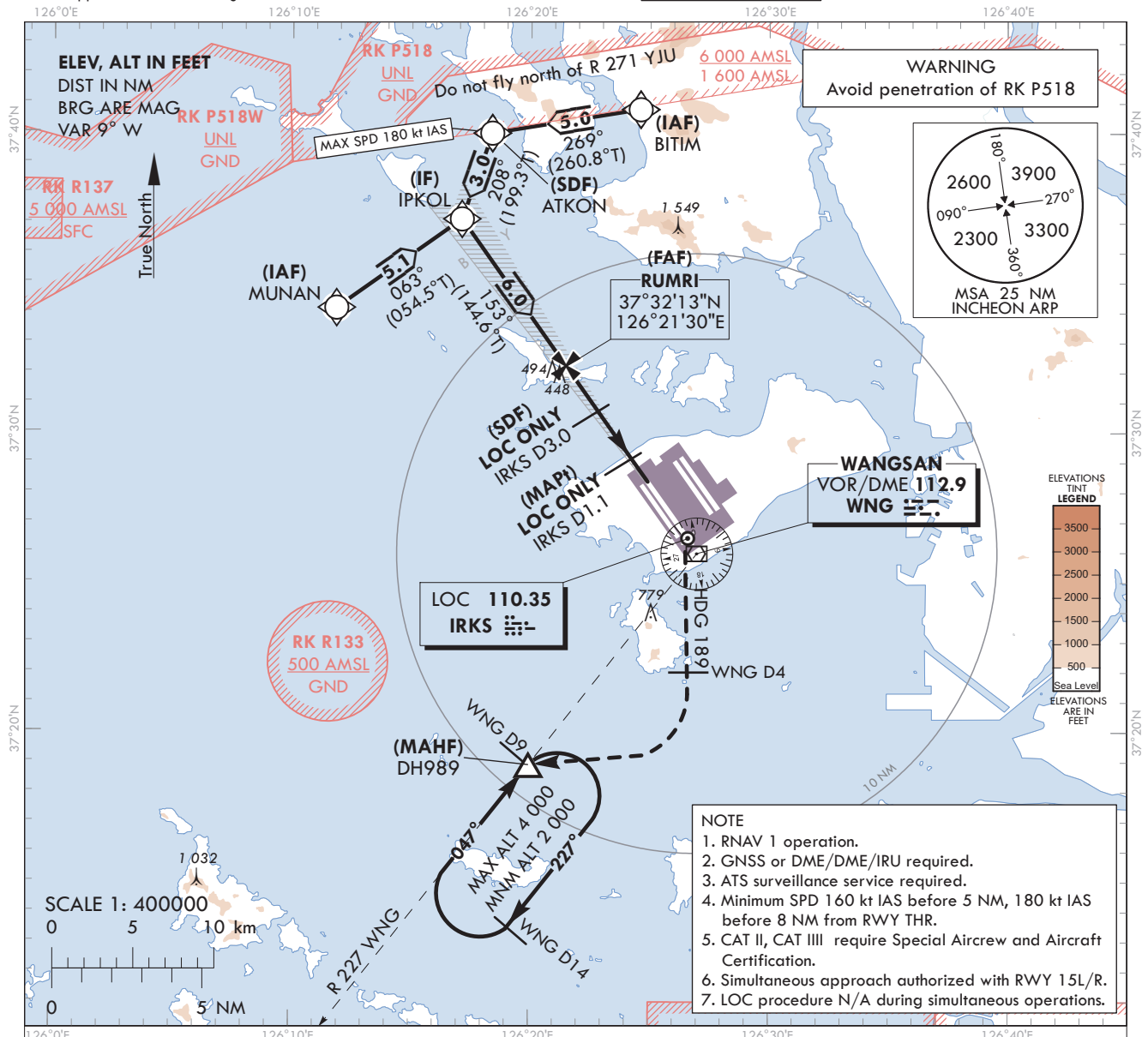
Note : Approach under ICAO Flight Procedures.

SEOUL	APP	119.75
		121.35
INCHEON	TWR	118.2
		118.8

SEOUL/Incheon Intl(RKSI)

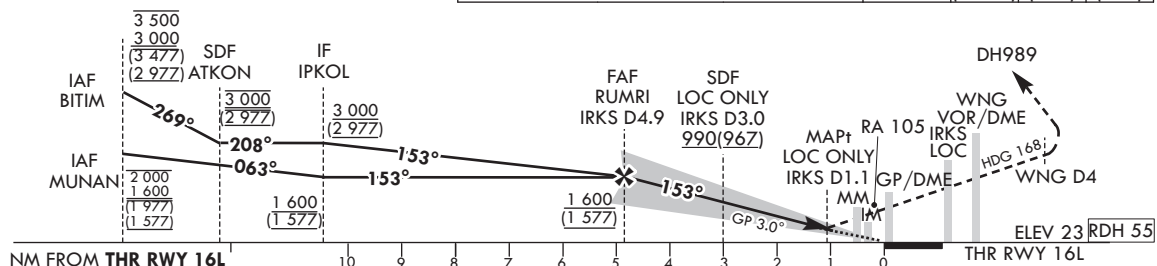
ILS or LOC RWY 16L

CAT II & III



TRANSITION ALT 14 000
TRANSITION LVL FL 140

RECOMMENDED PROFILE (LOC ONLY)	DME ISRR	4	3	2
Final Approach Gradient 5.30%, 322 ft/NM	ALT(HGT)	1 310 (1 287)	988 (965)	666 (643)



Fly RWY heading, climb to 2 000 ft. At 500 ft, turn right heading 189. At WNG 4 DME, turn right direct to DH989. Hold as published. Do not turn before passing MAPt.

1. Missed approach turn limited to 210 kt IAS maximum.
2. Missed approach minimum climb gradient of 2.5% to 2 000 ft (OCH 437 or 387), 4.0% to 2 000 ft (OCH 200 or 100).

- * Timing Not authorized for defining MAPt.
- * Circling Not authorized.

OCA (H)		A	B	C	D
Straight-in Approach	CAT-I (CG 2.5%)	460 (437)			
	CAT-I (CG 4.0%)	223 (200)			
	LOC	410 (387)			
	CAT II	123 (100)			
	CAT III	-			

Change : Amended chart symbol.

SEOUL/Incheon Intl(RKSI)
ILS or LOC RWY 16L
CAT II & III

AERONAUTICAL DATA TABULATION

ILS/LOC Approach to RWY 16L from MUNAN to IPKOL(IF)		
Fix / Point	Coordinates	
MUNAN(IAF)	37°34'09.3"N	126°11'53.0"E
IPKOL(IF)	37°37'07.4"N	126°17'07.3"E

ILS/LOC Approach to RWY 16L from BITIM to IPKOL(IF)		
Fix / Point	Coordinates	
BITIM(IAF)	37°40'48.0"N	126°24'36.1"E
ATKON(SDF)	37°39'59.6"N	126°18'23.2"E
IPKOL(IF)	37°37'07.4"N	126°17'07.3"E

ILS/LOC Approach to RWY 16L from IPKOL(IF) to MAHF		
Fix / Point	Coordinates	
RUMRI(FAF)	BRG 153.16°/4.89 NM IRKS	37°32'12.9"N 126°21'30.4"E
D3.0 IRKS(SDF) (LOC ONLY)	BRG 153.16°/3.00 NM IRKS	37°30'40.6"N 126°22'52.7"E
D1.1 IRKS(MAPt) (LOC ONLY)	BRG 153.16°/1.10 NM IRKS	37°29'07.4"N 126°24'15.7"E
THR RWY 16L		37°28'22.11"N 126°24'56.05"E
IRKS DME		37°28'11.4"N 126°24'59.7"E
WNG VOR/DME		37°25'58.6"N 126°27'00.0"E
Climb to 500 ft	HDG 153	-
D4 WNG	HDG 189	-
DH989	BRG 226.64°/9.00 NM WNG	37°18'55.0"N 126°19'59.0"E

**INSTRUMENT
APPROACH
CHART - ICAO**

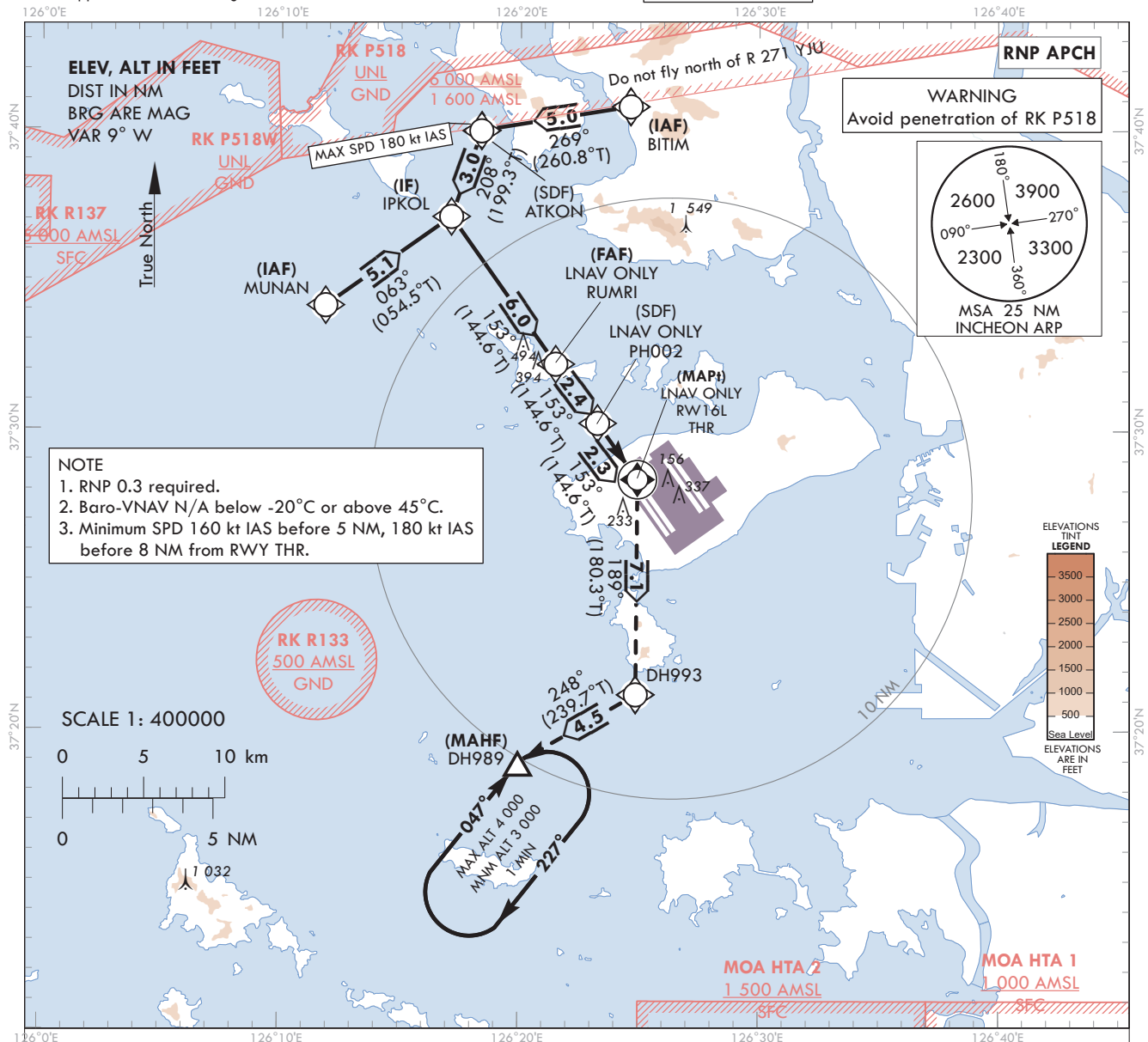
AERODROME ELEV 23 ft
HEIGHTS RELATED TO
THR RWY 16L - ELEV 23 ft

SEOUL APP 119.75
121.35
INCHEON TWR 118.2
118.8

SEOUL/Incheon Intl(RKSI)

RNP RWY 16L

Note : Approach under ICAO Flight Procedures.



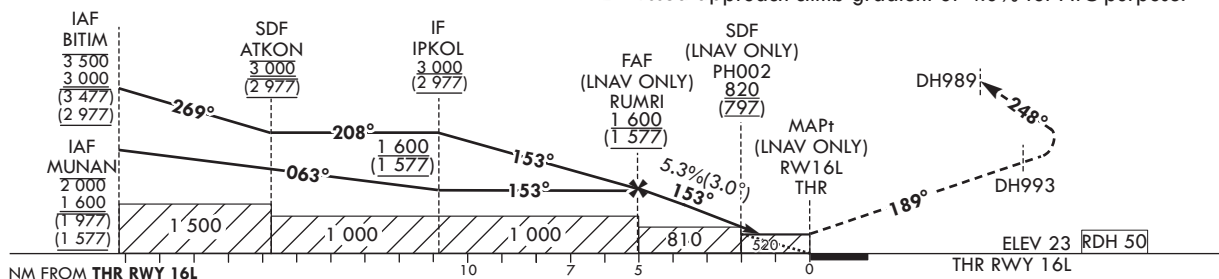
TRANSITION ALT 14 000
TRANSITION LVL FL 140

MISSED APPROACH

Climb to 3 000 ft. Track to DH993 and DH989. Hold as published.

NOTE

1. Missed approach turn limited to 240 kt IAS maximum.
2. Missed approach climb gradient of 4.0% for ATC purpose.



OCA (H)		A	B	C	D		Knots	60	90	120	150	180
Straight-in Approach	LNAV/VNAV	430 (407)				Rate of descent	V/V fpm	324	486	648	810	972
	LNAV	520 (497)				* Timing Not authorized for defining MAPt. * Circling Not authorized.						

Change : Information of profile view.

SEOUL/Incheon Intl(RKSI)
RNP RWY 16L

AERONAUTICAL DATA TABULATION

Instrument Approach Procedure Coding Tables

RNP RWY 16L - via MUNAN(IAF) to DH989(MAHF)

Serial Number	Path Descriptor	Waypoint Identifier	Fly-over	Course/Track °M(°T)	Distance (NM)	Turn direction	Altitude (ft)	Speed (kt)	Coordinates	VPA/RDH	Navigation specification	Remarks
001	IF	MUNAN	-	-	-	-	-2 000 +1 600	-	37°34'09.3"N 126°11'53.0"E	-	RNP APCH	IAF
002	TF	IPKOL	-	063 (054.5)	5.1	-	+1 600	-	37°37'07.4"N 126°17'07.3"E	-	RNP APCH	IF
003	TF	RUMRI	-	153 (144.6)	6.0	-	+1 600	-	37°32'12.9"N 126°21'30.4"E	-	RNP APCH	FAF
004	TF	PH002	-	153 (144.6)	2.4	-	+820	-	37°30'14.8"N 126°23'15.7"E	-	RNP APCH	SDF
005	TF	RW16L	Y	153 (144.6)	2.3	-	+520	-	37°28'22.1"N 126°24'56.06"E	-3.05/50	RNP APCH	MAPt
006	TF	DH993	-	189 (180.3)	7.1	-	-	-240	37°21'12.6"N 126°24'53.1"E	-	RNP APCH	-
007	TF	DH989	Y	248 (239.7)	4.5	-	+3 000	-240	37°18'55.0"N 126°19'59.0"E	-	RNP APCH	-
008	HM	DH989	Y	047 (038.4)	-	R	-4 000 +3 000	-	37°18'55.0"N 126°19'59.0"E	-	RNP APCH	1 min (Outbound timing)

RNP RWY 16L - via BITIM(IAF) to DH989(MAHF)

Serial Number	Path Descriptor	Waypoint Identifier	Fly-over	Course/Track °M(°T)	Distance (NM)	Turn direction	Altitude (ft)	Speed (kt)	Coordinates	VPA/RDH	Navigation specification	Remarks
001	IF	BITIM	-	-	-	-	-3 500 +3 000	-	37°40'48.0"N 126°24'36.1"E	-	RNP APCH	IAF
002	TF	ATKON	-	269 (260.8)	5.0	-	@3 000	-180	37°39'59.6"N 126°18'23.2"E	-	RNP APCH	SDF
003	TF	IPKOL	-	208 (199.3)	3.0	-	+3 000	-	37°37'07.4"N 126°17'07.3"E	-	RNP APCH	IF
004	TF	RUMRI	-	153 (144.6)	6.0	-	+1 600	-	37°32'12.9"N 126°21'30.4"E	-	RNP APCH	FAF
005	TF	PH002	-	153 (144.6)	2.4	-	+820	-	37°30'14.8"N 126°23'15.7"E	-	RNP APCH	SDF
006	TF	RW16L	Y	153 (144.6)	2.3	-	+520	-	37°28'22.1"N 126°24'56.06"E	-3.05/50	RNP APCH	MAPt
007	TF	DH993	-	189 (180.3)	7.1	-	-	-240	37°21'12.6"N 126°24'53.1"E	-	RNP APCH	-
008	TF	DH989	Y	248 (239.7)	4.5	-	+3 000	-240	37°18'55.0"N 126°19'59.0"E	-	RNP APCH	-
009	HM	DH989	Y	047 (038.4)	-	R	-4 000 +3 000	-	37°18'55.0"N 126°19'59.0"E	-	RNP APCH	1 min (Outbound timing)

**INSTRUMENT
APPROACH
CHART-ICAO**

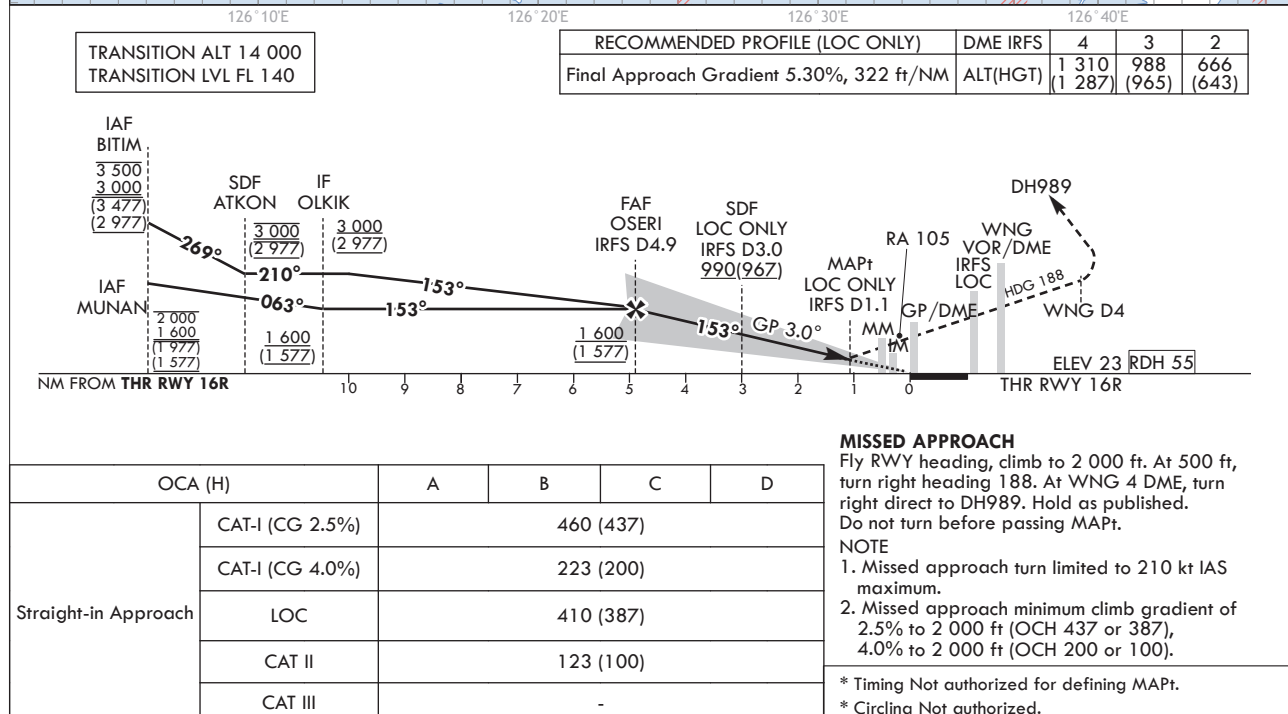
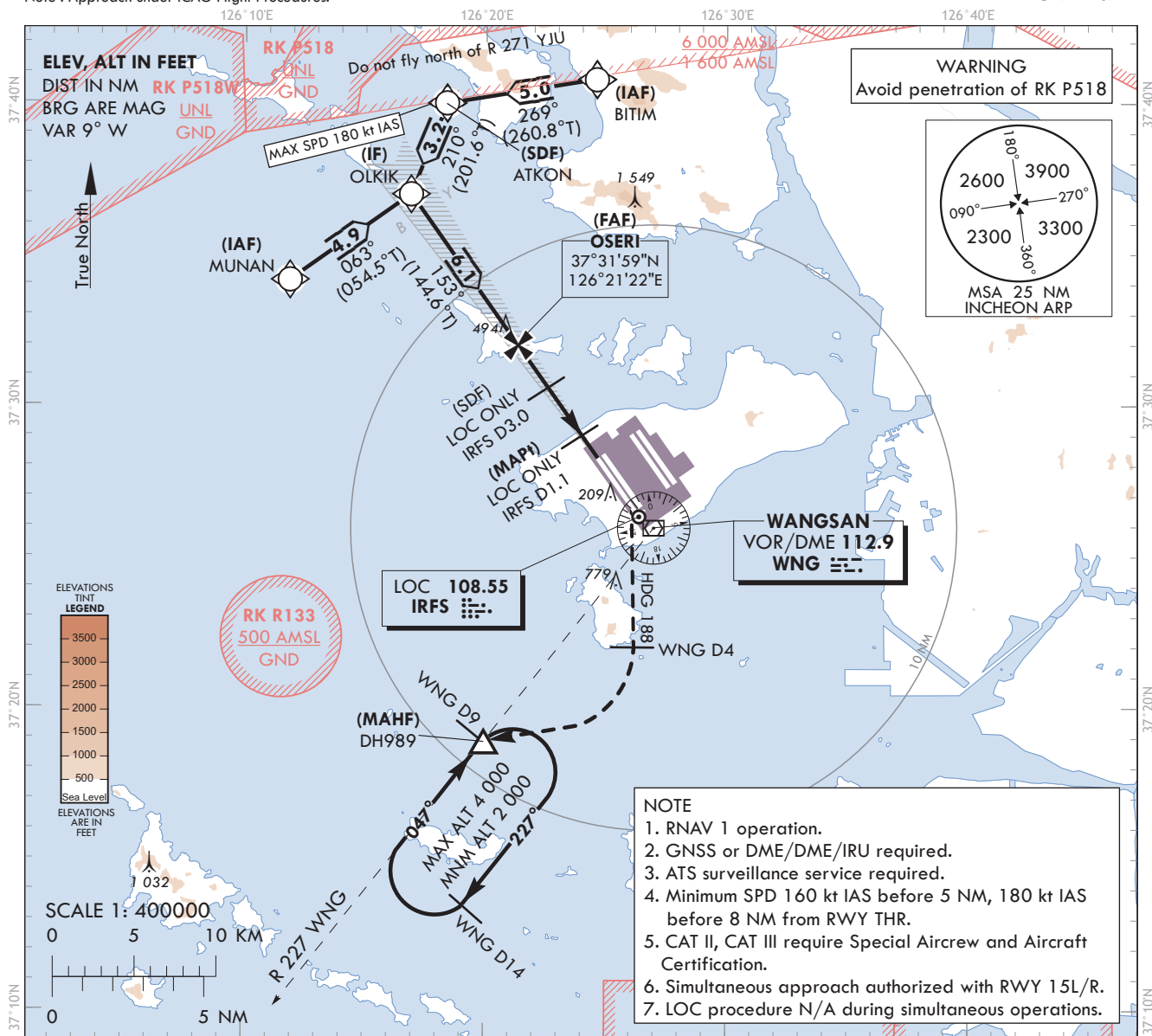
Note : Approach under ICAO Flight Procedures.

AERODROME ELEV 23 ft
HEIGHTS RELATED TO
THR RWY 16R - ELEV 23 ft

SEOUL APP 119.75
121.35
INCHEON TWR 118.2
118.8

SEOUL/Incheon Intl(RKSI)

ILS or LOC RWY 16R
CAT II & III



Change : Information of profile view.

SEOUL/Incheon Intl(RKSI)
ILS or LOC RWY 16R
CAT II & III

AERONAUTICAL DATA TABULATION

ILS/LOC Approach to RWY 16R from MUNAN to OLKIK(IF)	
Fix / Point	Coordinates
MUNAN(IAF)	37°34'09.3"N 126°11'53.0"E
OLKIK(IF)	37°36'59.6"N 126°16'53.5"E

ILS/LOC Approach to RWY 16R from BITIM to OLKIK(IF)	
Fix / Point	Coordinates
BITIM(IAF)	37°40'48.0"N 126°24'36.1"E
ATKON(SDF)	37°39'59.6"N 126°18'23.2"E
OLKIK(IF)	37°36'59.6"N 126°16'53.5"E

ILS/LOC Approach to RWY 16R from OLKIK(IF) to MAHF	
Fix / Point	Coordinates
OSER(FAF) BRG 153.16°/4.89 NM IRFS	37°31'59.0"N 126°21'22.1"E
D3.0 IRFS(SDF) (LOC ONLY) BRG 153.16°/3.00 NM IRFS	37°30'26.2"N 126°22'44.8"E
D1.1 IRFS(MAPt) (LOC ONLY) BRG 153.16°/1.10 NM IRFS	37°28'53.2"N 126°24'07.7"E
THR RWY 16R	37°28'07.71"N 126°24'48.18"E
IRFS DME	37°27'56.9"N 126°24'51.6"E
WNG VOR/DME	37°25'58.6"N 126°27'00.0"E
Climb to 500 ft HDG 153	-
D4 WNG HDG 188	-
DH989 BRG 226.64°/9.00 NM WNG	37°18'55.0"N 126°19'59.0"E

**INSTRUMENT
APPROACH
CHART - ICAO**

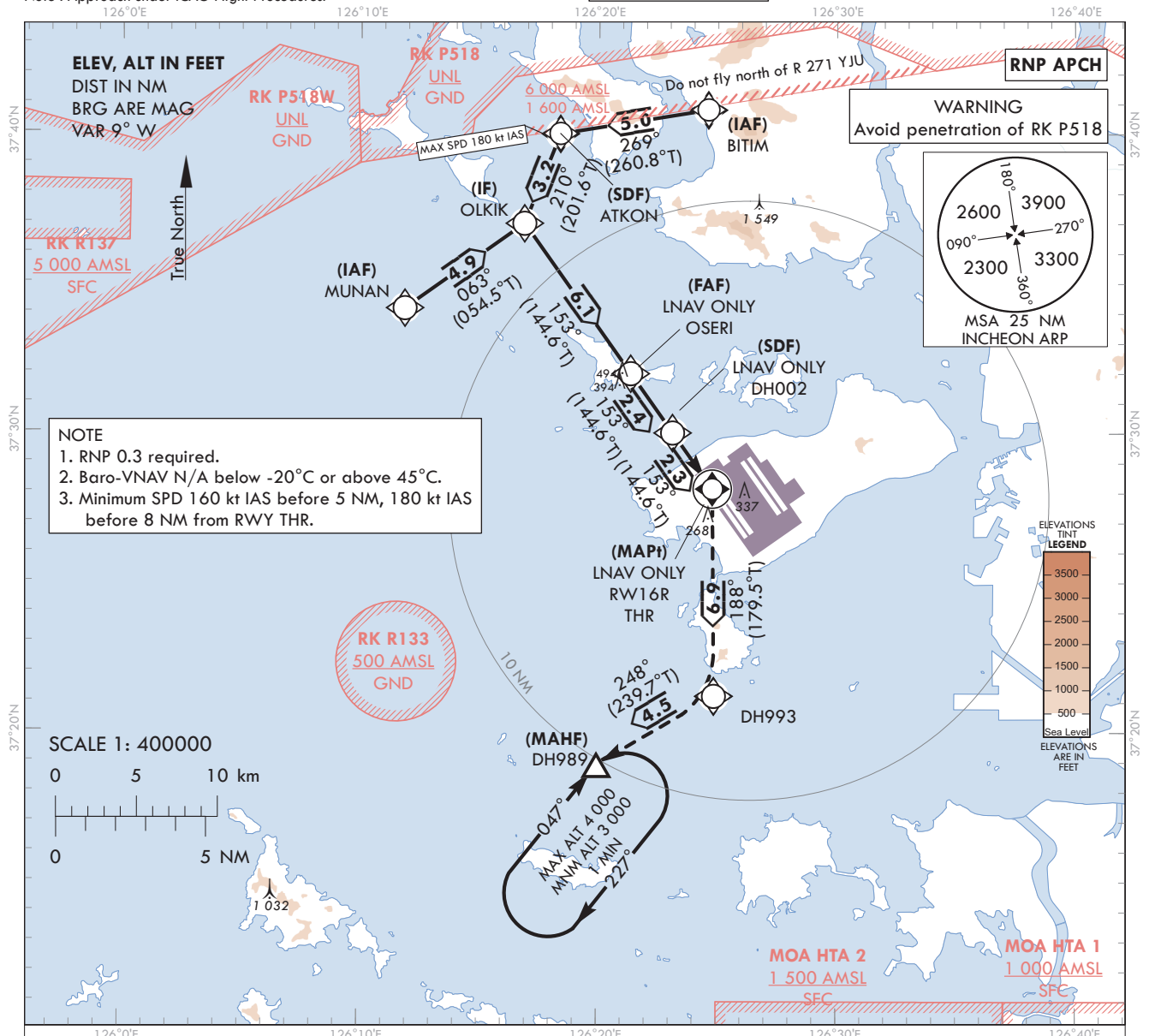
AERODROME ELEV 23 ft
HEIGHTS RELATED TO
THR RWY 16R - ELEV 23 ft

SEOUL APP 119.75
121.35
INCHEON TWR 118.2
118.8

SEOUL/Incheon Intl(RKSI)

RNP RWY 16R

Note : Approach under ICAO Flight Procedures.



TRANSITION ALT 14 000
TRANSITION LVL FL 140

MISSED APPROACH

Climb to 3 000 ft. Track to DH993 and DH989. Hold as published.

NOTE

1. Missed approach turn limited to 240 kt IAS maximum.
2. Missed approach climb gradient of 4.0% for ATC purpose.

The chart illustrates the missed approach procedure for RWY 16R. It shows two parallel paths starting from the runway end. The left path starts at IAF BITIM (3 500) and IAF MUNAN (2 000). The right path starts at IAF OLKIK (3 000) and IAF OSERI (1 600). Both paths follow a series of turns with specified angles and altitudes. The left path turns 269° to 210° and then 063°. The right path turns 153° to 153° and then 153°. The chart also shows the MAPt (MAP of Approach) at 820 (797) and the THR (Threshold) at 810 (520). The chart includes a scale for NM FROM THR RWY 16R (0 to 10) and a scale for ELEV 23 (RDH 50).

OCA (H)		A	B	C	D	Knots						
Straight-in Approach	LNAV/VNAV	430 (407)				Rate of descent	V/V fpm	323	485	647	809	970
	LNAV	520 (497)					* Timing Not authorized for defining MAPt. * Circling Not authorized.					

Change : Information of profile view.

SEOUL/Incheon Intl(RKSI)
RNP RWY 16R

AERONAUTICAL DATA TABULATION

Instrument Approach Procedure Coding Tables

RNP RWY 16R - via MUNAN(IAF) to DH989(MAHF)

Serial Number	Path Descriptor	Waypoint Identifier	Fly-over	Course/Track °M(°T)	Distance (NM)	Turn direction	Altitude (ft)	Speed (kt)	Coordinates	VPA/ RDH	Navigation specification	Remarks
001	IF	MUNAN	-	-	-	-	-2 000 +1 600	-	37°34'09.3"N 126°11'53.0"E	-	RNP APCH	IAF
002	TF	OLKIK	-	063 (054.5)	4.9	-	+1 600	-	37°36'59.6"N 126°16'53.5"E	-	RNP APCH	IF
003	TF	OSERI	-	153 (144.6)	6.1	-	+1 600	-	37°31'59.0"N 126°21'22.1"E	-	RNP APCH	FAF
004	TF	DH002	-	153 (144.6)	2.4	-	+820	-	37°30'00.4"N 126°23'07.8"E	-	RNP APCH	SDF
005	TF	RW16R	Y	153 (144.6)	2.3	-	+520	-	37°28'07.7"N 126°24'48.1"E	-3.05/50	RNP APCH	MAPt
006	TF	DH993	-	188 (179.5)	6.9	-	-	-240	37°21'12.6"N 126°24'53.1"E	-	RNP APCH	-
007	TF	DH989	Y	248 (239.7)	4.5	-	+3 000	-240	37°18'55.0"N 126°19'59.0"E	-	RNP APCH	-
008	HM	DH989	Y	047 (038.4)	-	R	-4 000 +3 000	-	37°18'55.0"N 126°19'59.0"E	-	RNP APCH	1 min (Outbound timing)

RNP RWY 16R - via BITIM(IAF) to DH989(MAHF)

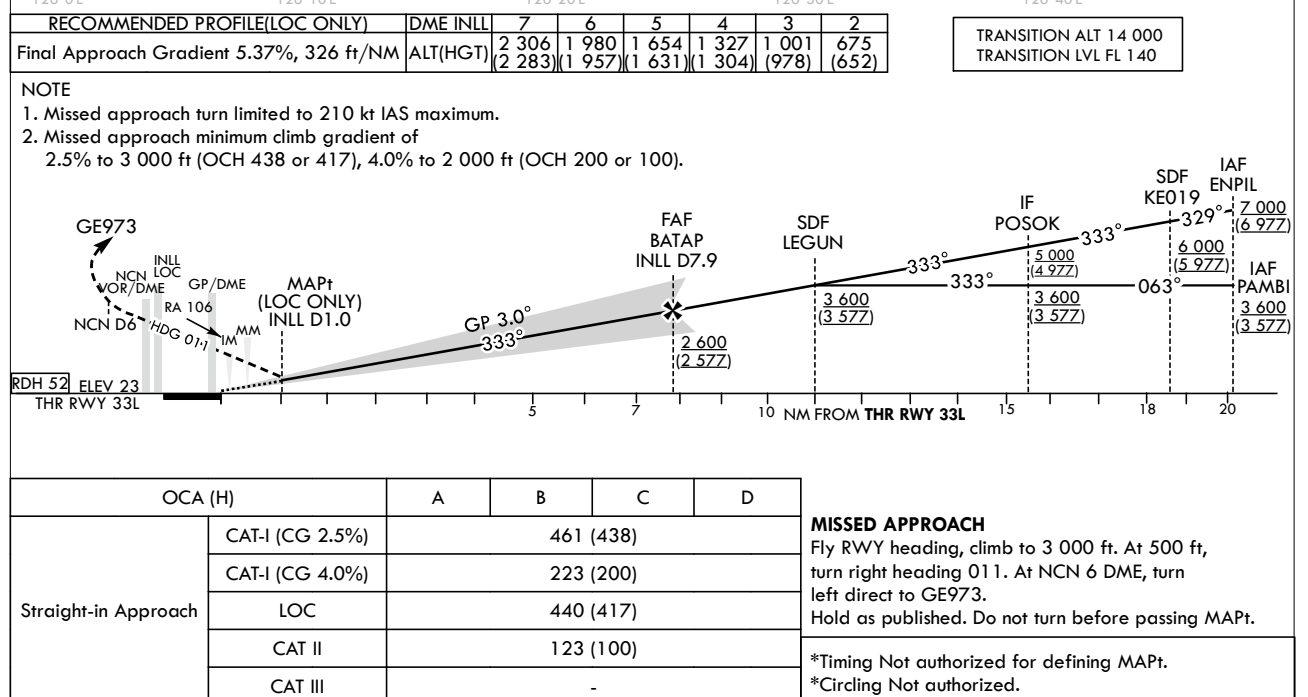
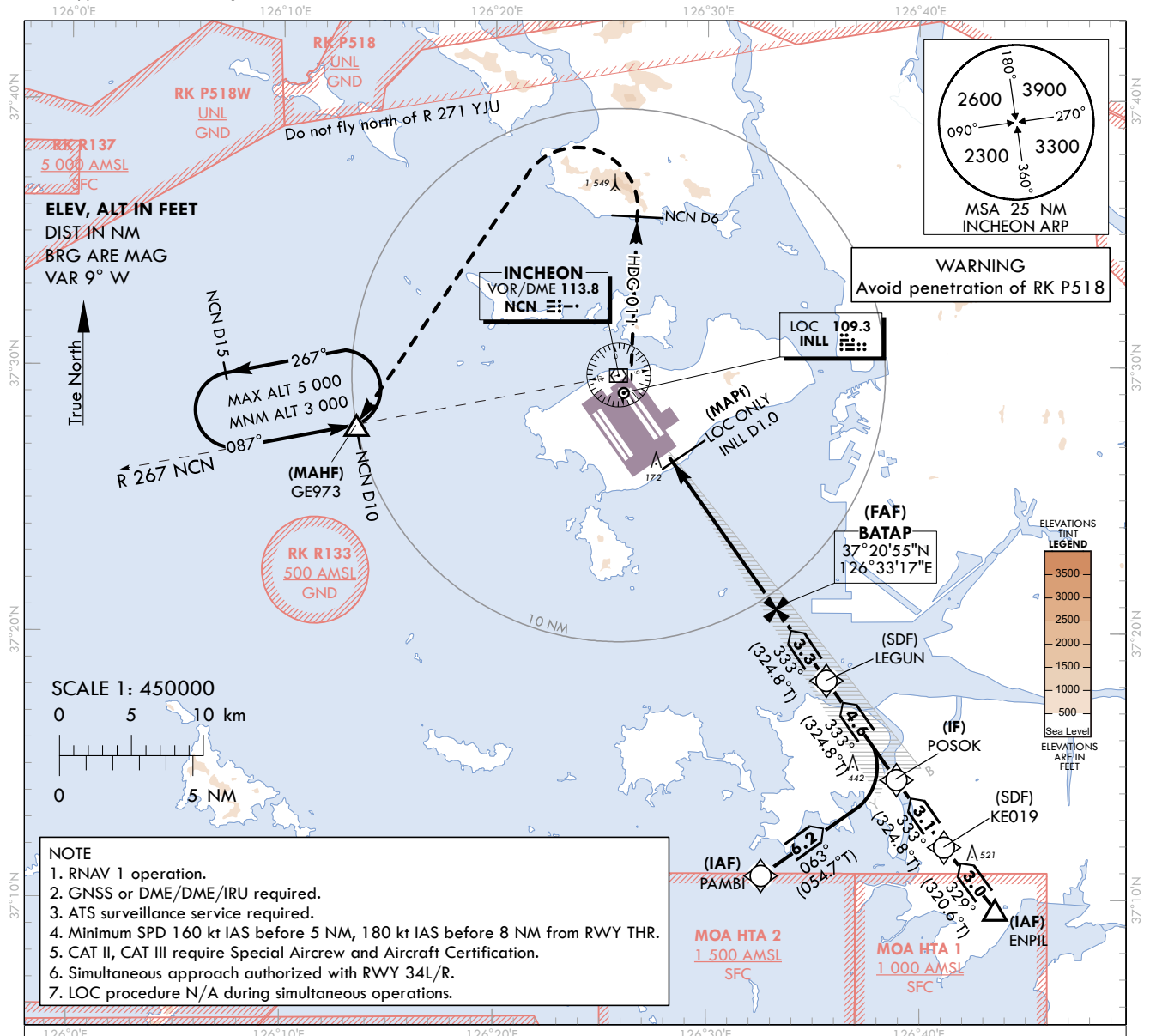
Serial Number	Path Descriptor	Waypoint Identifier	Fly-over	Course/Track °M(°T)	Distance (NM)	Turn direction	Altitude (ft)	Speed (kt)	Coordinates	VPA/ RDH	Navigation specification	Remarks
001	IF	BITIM	-	-	-	-	-3 500 +3 000	-	37°40'48.0"N 126°24'36.1"E	-	RNP APCH	IAF
002	TF	ATKON	-	269 (260.8)	5.0	-	@3 000	-180	37°39'59.6"N 126°18'23.2"E	-	RNP APCH	SDF
003	TF	OLKIK	-	210 (201.6)	3.2	-	+3 000	-	37°36'59.6"N 126°16'53.5"E	-	RNP APCH	IF
004	TF	OSERI	-	153 (144.6)	6.1	-	+1 600	-	37°31'59.0"N 126°21'22.1"E	-	RNP APCH	FAF
005	TF	DH002	-	153 (144.6)	2.4	-	+820	-	37°30'00.4"N 126°23'07.8"E	-	RNP APCH	SDF
006	TF	RW16R	Y	153 (144.6)	2.3	-	+520	-	37°28'07.7"N 126°24'48.1"E	-3.05/50	RNP APCH	MAPt
007	TF	DH993	-	188 (179.5)	6.9	-	-	-240	37°21'12.6"N 126°24'53.1"E	-	RNP APCH	-
008	TF	DH989	Y	248 (239.7)	4.5	-	+3 000	-240	37°18'55.0"N 126°19'59.0"E	-	RNP APCH	-
009	HM	DH989	Y	047 (038.4)	-	R	-4 000 +3 000	-	37°18'55.0"N 126°19'59.0"E	-	RNP APCH	1 min (Outbound timing)

INSTRUMENT
APPROACH
CHART - ICAOAERODROME ELEV 23 ft
HEIGHTS RELATED TO
THR RWY 33L - ELEV 23 ftSEOUL APP 119.75
121.35
INCHEON TWR 118.2
118.8

SEOUL/Incheon Intl(RKSI)

ILS or LOC RWY 33L
CAT II & III

Note : Approach under ICAO Flight Procedures.



Change : Information of landing minima(OCA(H)) and NOTE.

SEOUL/Incheon Intl(RKSJ)
ILS or LOC RWY 33L
CAT II & III

AERONAUTICAL DATA TABULATION

ILS/LOC Approach to RWY 33L from PAMBI to POSOK(IF)		
Fix / Point	Coordinates	
PAMBI(IAF)	37°10'54.3"N	126°32'34.4"E
POSOK(IF)	37°14'30.3"N	126°38'56.6"E

ILS/LOC Approach to RWY 33L from ENPIL to POSOK(IF)		
Fix / Point	Coordinates	
ENPIL(IAF)	37°09'39.0" N	126°43'34.0" E
KE019(SDF)	37°11'58.6"N	126°41'10.5"E
POSOK(IF)	37°14'30.3"N	126°38'56.6"E

ILS/LOC Approach to RWY 33L from POSOK(IF) to MAHF		
Fix / Point	Coordinates	
LEGUN(SDF)	37°18'14.5"N	126°35'38.6"E
BATAP(FAF) BRG 333.28°/7.92 NM INLL	37°20'54.7"N	126°33'16.8"E
D1.0 INLL (MAPt LOC ONLY) BRG 333.28°/1.00 NM INLL	37°26'34.2"N	126°28'15.6"E
THR RWY 33L	37°27'15.21"N	126°27'39.08"E
INLL DME	37°27'25.4"N	126°27'35.9"E
NCN VOR/DME	37°29'41.7"N	126°25'49.2"E
Climb to 500 ft HDG 333	-	
D6 NCN HDG 011	-	
GE973 BRG 267.26°/10 NM NCN	37°27'47.0"N	126°13'29.0"E

INSTRUMENT
APPROACH
CHART - ICAO

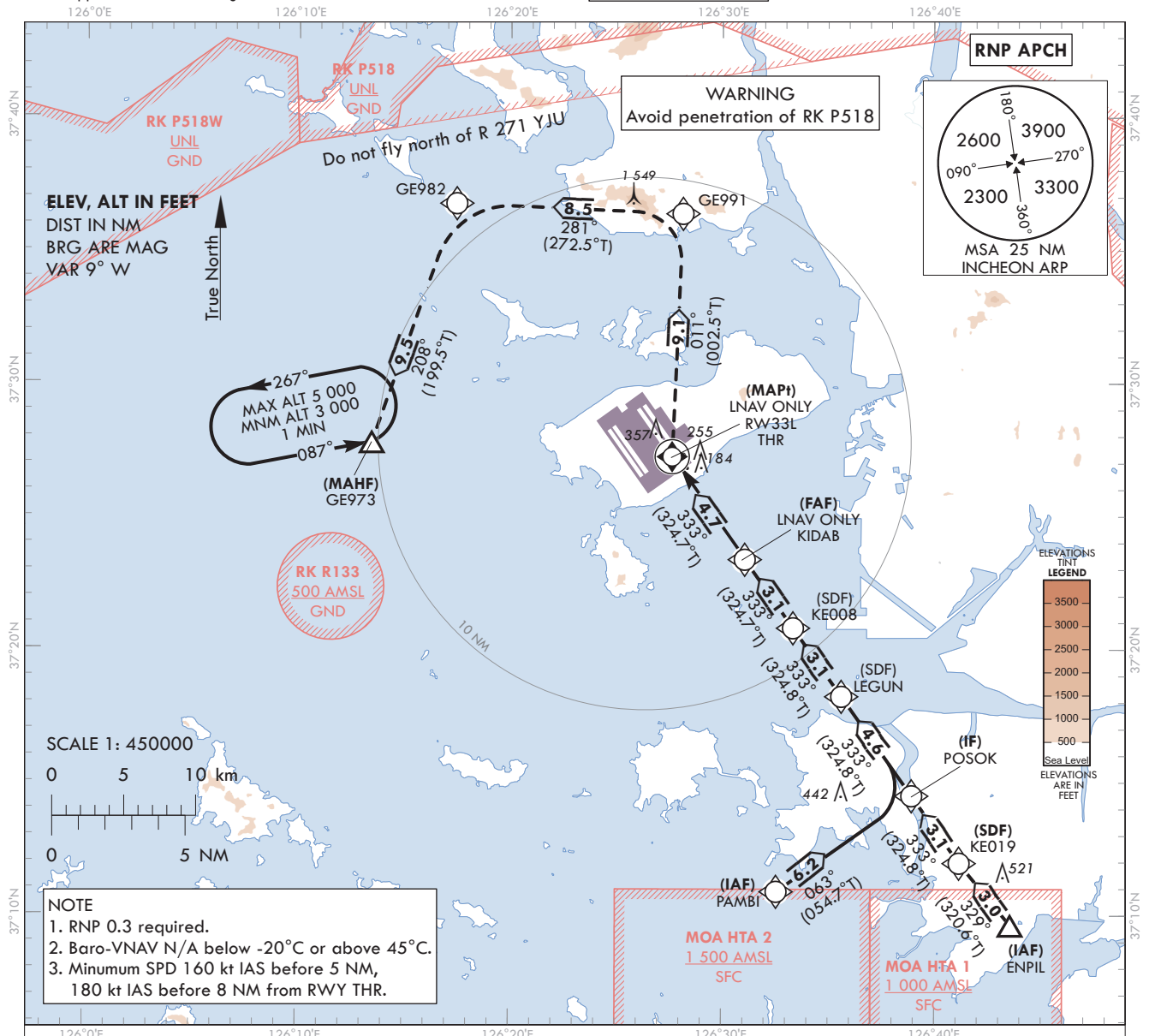
AERODROME ELEV 23 ft
HEIGHTS RELATED TO
THR RWY 33L - ELEV 23 ft

SEOUL APP	119.75
INCHEON TWR	121.35
	118.2
	118.8

SEOUL/Incheon Intl(RKSI)

RNP RWY 33L

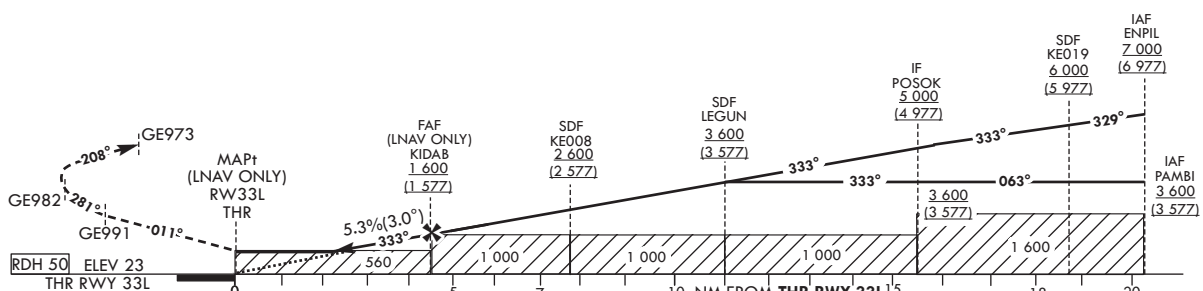
Note : Approach under ICAO Flight Procedures.



MISSED APPROACH

Climb to 3 000 ft. Track to GE991, GE982 and GE973. Hold as published.

TRANSITION ALT 14 000
TRANSITION LVL FL 140



OCA (H)		A	B	C	D		Knots	60	90	120	150	180
Straight-in Approach	LNAV/VNAV	430 (407)				Rate of descent	V/V fpm	323	484	645	807	968
	LNAV	560 (537)				*Timing Not authorized for defining MAPt. *Circling Not authorized.						

Change : Information of landing minima(OCA(H)).

SEOUL/Incheon Intl(RKSI)
RNP RWY 33L

AERONAUTICAL DATA TABULATION

Instrument Approach Procedure Coding Tables

RNP RWY 33L - via PAMBI(IAF) to GE973(MAHF)

Serial Number	Path Descriptor	Waypoint Identifier	Fly-over	Course/Track °M(°T)	Distance (NM)	Turn direction	Altitude (ft)	Speed (kt)	Coordinates	VPA/ TCH	Navigation specification	Remarks
001	IF	PAMBI	-	-	-	-	+3 600	-	37°10'54.3"N 126°32'34.4"E	-	RNP APCH	IAF
002	TF	POSOK	-	063 (054.7)	6.2	-	+3 600	-	37°14'30.3"N 126°38'56.6"E	-	RNP APCH	IF
003	TF	LEGUN	-	333 (324.8)	4.6	-	+3 600	-	37°18'14.5"N 126°35'38.6"E	-	RNP APCH	SDF
004	TF	KE008	-	333 (324.8)	3.1	-	+2 600	-	37°20'48.9"N 126°33'21.9"E	-	RNP APCH	SDF
005	TF	KIDAB	-	333 (324.7)	3.1	-	+1 600	-	37°23'23.2"N 126°31'05.1"E	-	RNP APCH	FAF
006	TF	RW33L	Y	333(324.7)	4.7	-	+560	-	37°27'15.2"N 126°27'39.08"E	-3.04/50	RNP APCH	MAPt
007	TF	GE991	-	011(002.5)	9.1	-	-	-	37°36'23.4"N 126°28'09.1"E	-	RNP APCH	-
008	TF	GE982	-	281(272.5)	8.5	-	-	-	37°36'45.2"N 126°17'27.9"E	-	RNP APCH	-
009	TF	GE973	Y	208(199.5)	9.5	-	+4 000	-	37°27'47.0"N 126°13'29.0"E	-	RNP APCH	-
010	HM	GE973	Y	087(078.9)	-	L	-5 000 +3 000	-	37°27'47.0"N 126°13'29.0"E	-	RNP APCH	1 min (Outbound timing)

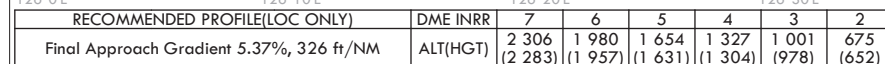
RNP RWY 33L - via ENPIL(IAF) to GE973(MAHF)

Serial Number	Path Descriptor	Waypoint Identifier	Fly-over	Course/Track °M(°T)	Distance (NM)	Turn direction	Altitude (ft)	Speed (kt)	Coordinates	VPA/ TCH	Navigation specification	Remarks
001	IF	ENPIL	-	-	-	-	+7 000	-	37°09'39.0"N 126°43'34.0"E	-	RNP APCH	IAF
002	TF	KE019	-	329 (320.6)	3.0	-	+6 000	-	37°11'58.6"N 126°41'10.5"E	-	RNP APCH	SDF
003	TF	POSOK	-	333 (324.8)	3.1	-	+5 000	-	37°14'30.3"N 126°38'56.6"E	-	RNP APCH	IF
004	TF	LEGUN	-	333 (324.8)	4.6	-	+3 600	-	37°18'14.5"N 126°35'38.6"E	-	RNP APCH	SDF
005	TF	KE008	-	333 (324.8)	3.1	-	+2 600	-	37°20'48.9"N 126°33'21.9"E	-	RNP APCH	SDF
006	TF	KIDAB	-	333 (324.7)	3.1	-	+1 600	-	37°23'23.2"N 126°31'05.1"E	-	RNP APCH	FAF
007	TF	RW33L	Y	333(324.7)	4.7	-	+560	-	37°27'15.2"N 126°27'39.08"E	-3.04/50	RNP APCH	MAPt
008	TF	GE991	-	011(002.5)	9.1	-	-	-	37°36'23.4"N 126°28'09.1"E	-	RNP APCH	-
009	TF	GE982	-	281(272.5)	8.5	-	-	-	37°36'45.2"N 126°17'27.9"E	-	RNP APCH	-
010	TF	GE973	Y	208(199.5)	9.5	-	+4 000	-	37°27'47.0"N 126°13'29.0"E	-	RNP APCH	-
011	HM	GE973	Y	087(078.9)	-	L	-5 000 +3 000	-	37°27'47.0"N 126°13'29.0"E	-	RNP APCH	1 min (Outbound timing)

AERODROME ELEV 23 ft
HEIGHTS RELATED TO
THR RWY 33R - ELEV **23 ft**

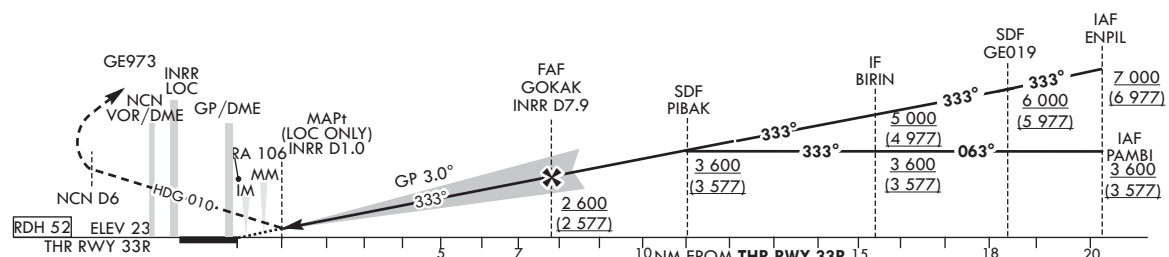
SEOUL	APP	119.75
		121.35
INCHEON	TWR	118.2
		118.8

ILS or LOC RWY 33R
CAT II & III



NOTE

1. Missed approach turn limited to 210 kt IAS maximum.
2. Missed approach minimum climb gradient of 2.5% to 3 000 ft (OCH 438 or 417), 4.0% to 2 000 ft (OCH 200 or 100).



OCA (H)		A	B	C	D
Straight-in Approach	CAT-I (CG 2.5%)	461 (438)			
	CAT-I (CG 4.0%)	223 (200)			
	LOC	440 (417)			
	CAT II	123 (100)			
	CAT III	-			

Fly RWY heading, climb to 3 000 ft. At 500 ft, turn right heading 010. At NCN 6 DME, turn left direct to GE973.
Hold as published. Do not turn before passing MAPt.

* Timing Not authorized for defining MAPt.
* Circling Not authorized.

Change : Information of landing minima(OCA(H)) and NOTE.

SEOUL/Incheon Intl(RKSI)
ILS or LOC RWY 33R
CAT II & III

AERONAUTICAL DATA TABULATION

ILS/LOC Approach to RWY 33R from PAMBI to BIRIN(IF)		
Fix / Point	Coordinates	
PAMBI(IAF)	37°10'54.3"N	126°32'34.4"E
BIRIN(IF)	37°14'38.1"N	126°39'10.4"E

ILS/LOC Approach to RWY 33R from ENPIL to BIRIN(IF)		
Fix / Point	Coordinates	
ENPIL(IAF)	37°09'39.0"N	126°43'34.0"E
GE019(SDF)	37°12'06.3"N	126°41'24.3"E
BIRIN(IF)	37°14'38.1"N	126°39'10.4"E

ILS/LOC Approach to RWY 33R from BIRIN(IF) to MAHF		
Fix / Point	Coordinates	
PIBAK(SDF)	37°18'22.2"N	126°35'52.3"E
GOKAK(FAF) BRG 333.28°/7.92 NM INRR	37°21'02.4"N	126°33'30.5"E
D1.0 INRR (MAPt LOC ONLY) BRG 333.28°/1.00 NM INRR	37°26'41.9"N	126°28'29.3"E
THR RWY 33R	37°27'22.97"N	126°27'52.82"E
INRR DME	37°27'33.2"N	126°27'49.7"E
NCN VOR/DME	37°29'41.7"N	126°25'49.2"E
Climb to 500 ft HDG 333	-	
D6 NCN HDG 010	-	
GE973 BRG 267.26°/10 NM NCN	37°27'47.0"N	126°13'29.0"E

**INSTRUMENT
APPROACH
CHART - ICAO**

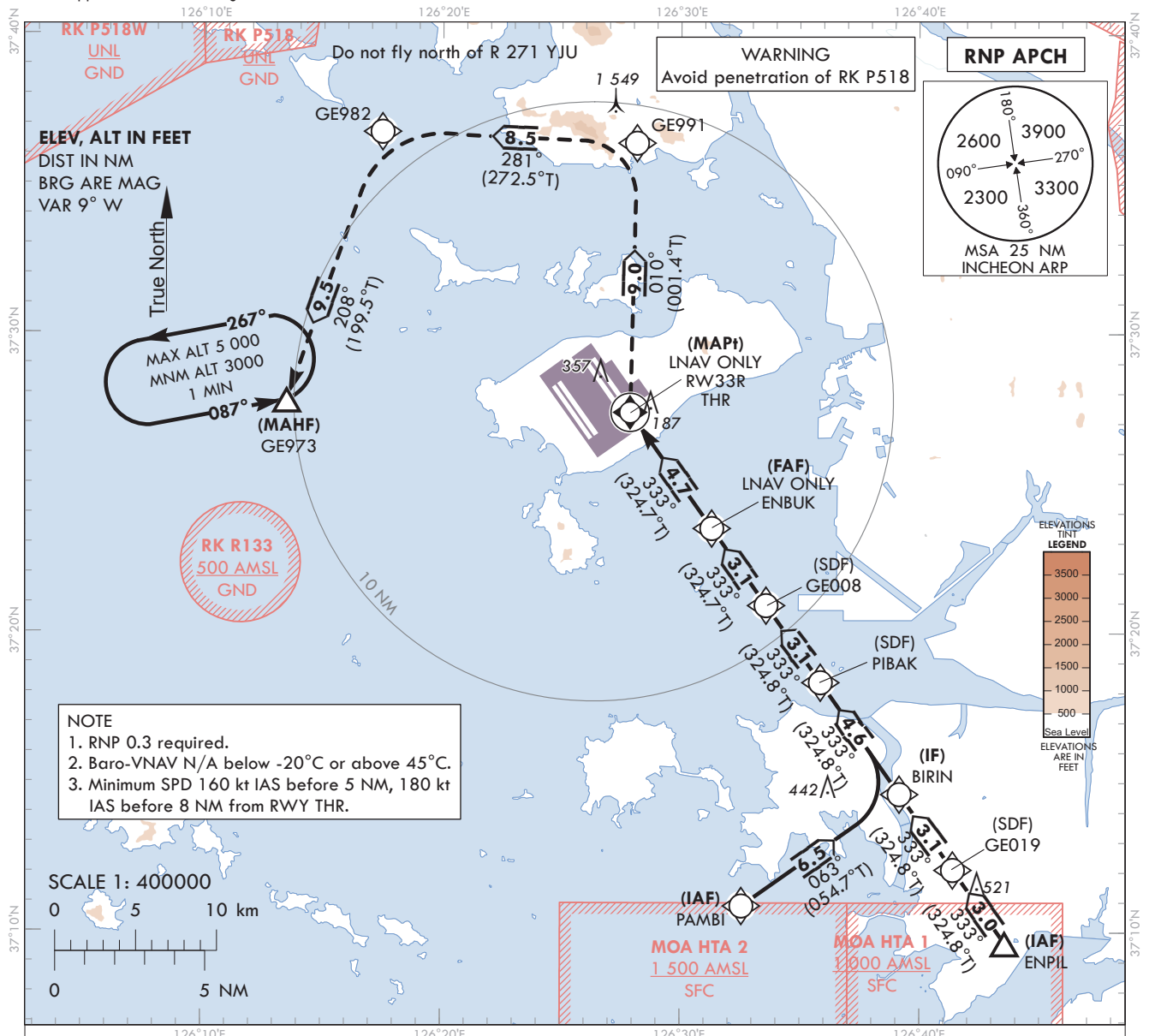
Note : Approach under ICAO Flight Procedures.

AERODROME ELEV 23 ft
HEIGHTS RELATED TO
THR RWY 33R - ELEV 23 ft

SEOUL APP	119.75
INCHEON TWR	121.35
	118.2
	118.8

SEOUL/Incheon Intl(RKSI)

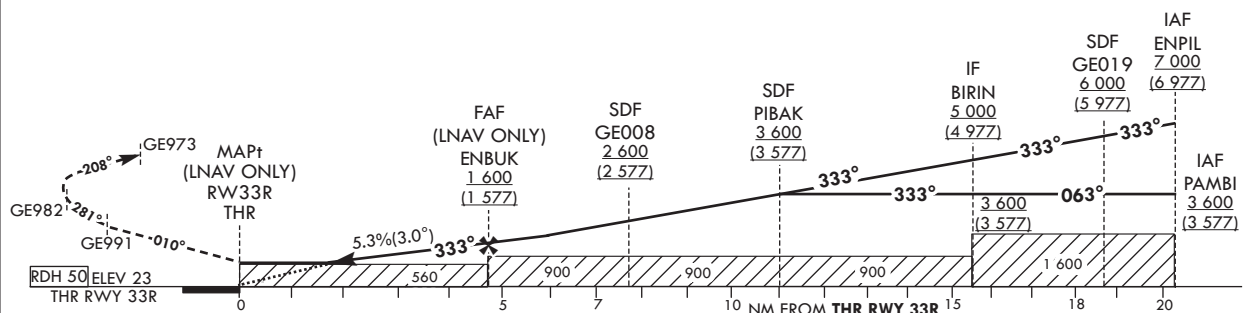
RNP RWY 33R



MISSED APPROACH

Climb to 3 000 ft. Track to GE991, GE982 and GE973. Hold as published.

TRANSITION ALT 14 000
TRANSITION LVL FL 140



OCA (H)		A	B	C	D		Knots	60	90	120	150	180
Straight-in Approach	LNAV/VNAV	430 (407)				Rate of descent	V/V fpm	323	484	645	807	968
	LNAV	560 (537)				*Timing Not authorized for defining MAPt. *Circling Not authorized.						

Change : Information of landing minima(OCA(H)).

SEOUL/Incheon Intl(RKSI)
RNP RWY 33R

AERONAUTICAL DATA TABULATION

Instrument Approach Procedure Coding Tables

RNP RWY 33R - via PAMBI(IAF) to GE973(MAHF)

Serial Number	Path Descriptor	Waypoint Identifier	Fly- over	Course/Track °M(°T)	Distance (NM)	Turn direction	Altitude (ft)	Speed (kt)	Coordinates	VPA/ TCH	Navigation specification	Remarks
001	IF	PAMBI	-	-	-	-	+3 600	-	37°10'54.3"N 126°32'34.4"E	-	RNP APCH	IAF
002	TF	BIRIN	-	063 (054.7)	6.5	-	+3 600	-	37°14'38.1"N 126°39'10.4"E	-	RNP APCH	IF
003	TF	PIBAK	-	333 (324.8)	4.6	-	+3 600	-	37°18'22.2"N 126°35'52.3"E	-	RNP APCH	SDF
004	TF	GE008	-	333 (324.8)	3.1	-	+2 600	-	37°20'56.6"N 126°33'35.7"E	-	RNP APCH	SDF
005	TF	ENBUK	-	333 (324.7)	3.1	-	+1 600	-	37°23'31.0"N 126°31'18.8"E	-	RNP APCH	FAF
006	TF	RW33R	Y	333(324.7)	4.7	-	+560	-	37°27'22.9"N 126°27'52.82"E	-3.04/50	RNP APCH	MAPt
007	TF	GE991	-	010(001.4)	9.0	-	-	-	37°36'23.4"N 126°28'09.1"E	-	RNP APCH	-
008	TF	GE982	-	281(272.5)	8.5	-	-	-	37°36'45.2"N 126°17'27.9"E	-	RNP APCH	-
009	TF	GE973	Y	208(199.5)	9.5	-	+3 000	-	37°27'47.0"N 126°13'29.0"E	-	RNP APCH	-
010	HM	GE973	Y	087(078.9)	-	L	-5 000 +3 000	-	37°27'47.0"N 126°13'29.0"E	-	RNP APCH	1 min (Outbound timing)

RNP RWY 33R - via ENPIL(IAF) to GE973(MAHF)

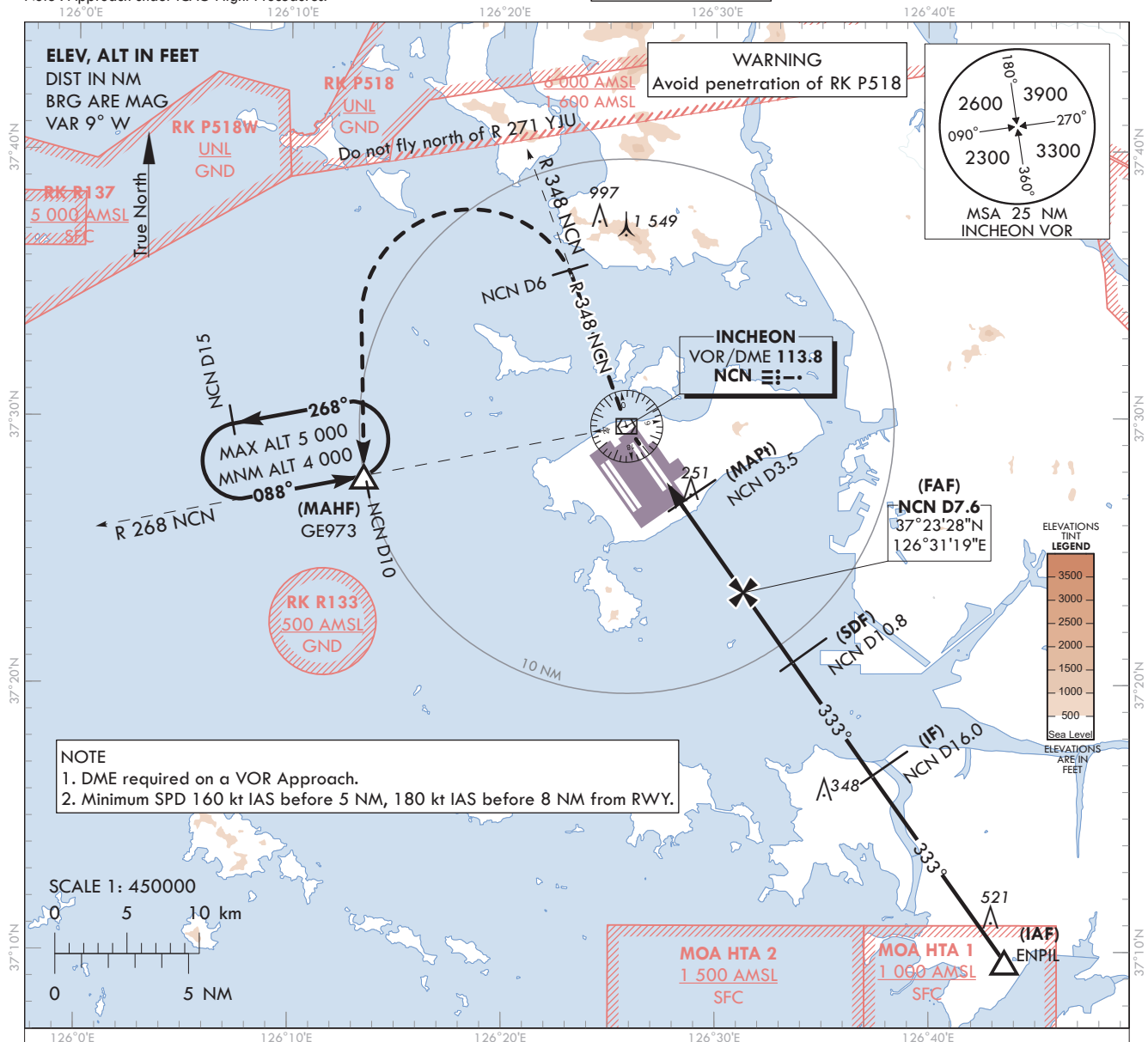
Serial Number	Path Descriptor	Waypoint Identifier	Fly- over	Course/Track °M(°T)	Distance (NM)	Turn direction	Altitude (ft)	Speed (kt)	Coordinates	VPA/ TCH	Navigation specification	Remarks
001	IF	ENPIL	-	-	-	-	+7 000	-	37°09'39.0"N 126°43'34.0"E	-	RNP APCH	IAF
002	TF	GE019	-	333 (324.8)	3.0	-	+6 000	-	37°12'06.3"N 126°41'24.3"E	-	RNP APCH	SDF
003	TF	BIRIN	-	333 (324.8)	3.1	-	+5 000	-	37°14'38.1"N 126°39'10.4"E	-	RNP APCH	IF
004	TF	PIBAK	-	333 (324.8)	4.6	-	+3 600	-	37°18'22.2"N 126°35'52.3"E	-	RNP APCH	SDF
005	TF	GE008	-	333 (324.8)	3.1	-	+2 600	-	37°20'56.6"N 126°33'35.7"E	-	RNP APCH	SDF
006	TF	ENBUK	-	333 (324.7)	3.1	-	+1 600	-	37°23'31.0"N 126°31'18.8"E	-	RNP APCH	FAF
007	TF	RW33R	Y	333(324.7)	4.7	-	+560	-	37°27'22.9"N 126°27'52.82"E	-3.04/50	RNP APCH	MAPt
008	TF	GE991	-	010(001.4)	9.0	-	-	-	37°36'23.4"N 126°28'09.1"E	-	RNP APCH	-
009	TF	GE982	-	281(272.5)	8.5	-	-	-	37°36'45.2"N 126°17'27.9"E	-	RNP APCH	-
010	TF	GE973	Y	208(199.5)	9.5	-	+3 000	-	37°27'47.0"N 126°13'29.0"E	-	RNP APCH	-
011	HM	GE973	Y	087(078.9)	-	L	-5 000 +3 000	-	37°27'47.0"N 126°13'29.0"E	-	RNP APCH	1 min (Outbound timing)

INSTRUMENT
APPROACH
CHART - ICAOAERODROME ELEV 23 ft
HEIGHTS RELATED TO
THR RWY 33R - ELEV 23 ftSEOUL APP 119.75
121.35
INCHEON TWR 118.2
118.8

SEOUL/Incheon Intl(RKSI)

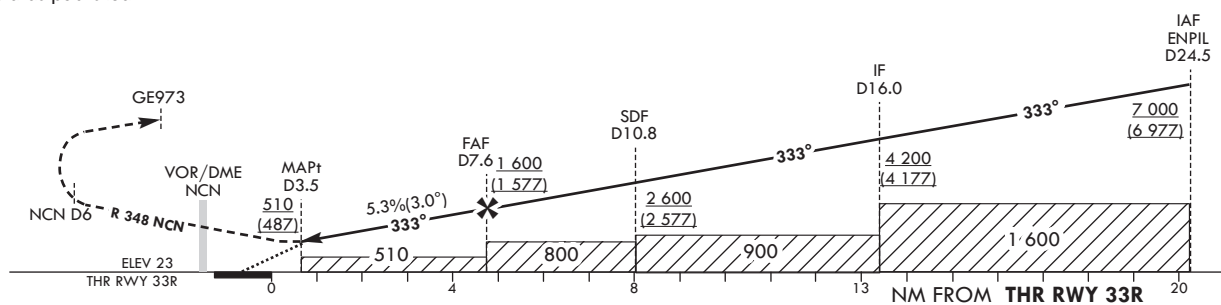
VOR RWY 33R

Note : Approach under ICAO Flight Procedures.



MISSED APPROACH

Climb to 4 000 ft via NCN VOR then turn right on R 348 NCN to 6 DME and turn left direct to GE973.
Hold as published.



OCA (H)	A	B	C	D		Knots	60	90	120	150	180
Straight-in Approach	510 (487)				Rate of descent	V/V fpm	320	480	640	800	960
					*Timing Not authorized for defining MAPt. *Circling Not authorized.						

SEOUL/Incheon Intl(RKSI)
VOR RWY 33R

AERONAUTICAL DATA TABULATION

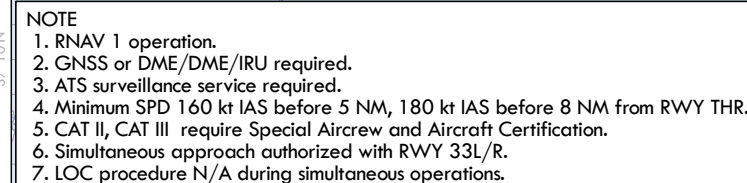
VOR Approach to RWY 33R from ENPIL			
Fix / Point		Coordinates	
ENPIL(IAF)		37°09'39.0"N	126°43'34.0"E
D16 NCN(IF)	BRG 333.19°/8.51 NM	37°16'35.5"N	126°37'22.8"E
D10.8 NCN(SDF)	BRG 333.00°/10.80 NM NCN	37°20'51.0"N	126°33'37.9"E
D7.6 NCN(FAF)	BRG 333.00°/7.60 NM NCN	37°23'28.2"N	126°31'19.3"E
D3.5 NCN(MAPt)	BRG 333.00°/3.50 NM NCN	37°26'49.6"N	126°28'21.5"E
THR RWY 33R	Final approach descent angle 3.01°	37°27'22.97"N	126°27'52.82"E
NCN VOR/DME		37°29'41.7"N	126°25'49.2"E
D6 NCN	R 348 NCN/6.00 NM NCN	37°35'19.7"N	126°23'12.9"E
GE973	BRG 267.72°/10.00 NM NCN	37°27'47.0"N	126°13'29.0"E

Change : Information of final approach descent angle(3° → 3.01°).

AERODROME ELEV 23 ft
HEIGHTS RELATED TO
THR RWY 34L - ELEV 23 ft

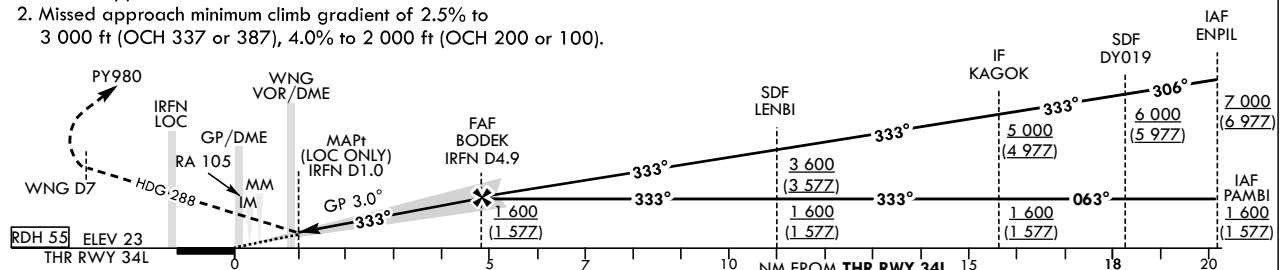
SEOUL	APP	119.75
		121.35
INCHEON	TWR	118.2
		118.8

ILS or LOC RWY 34L
CAT II & III



TRANSITION ALT	14 000
TRANSITION LVL	FL 140

1. Missed approach turn limited to 210 kt IAS maximum.
2. Missed approach minimum climb gradient of 2.5% to 3 000 ft (OCH 337 or 387), 4.0% to 2 000 ft (OCH 200 or 100).



MISSED APPROACH
Fly RWY heading, climb to 3 000 ft. At 500 ft, turn left heading 288. At WNG 7 DME, turn left direct to PY980.
Hold as published. Do not turn before passing MAPt.

* Timing Not authorized for defining the MAPt.
* Circling Not authorized.

AIRAC AIP AMDT 9/24
Effective : 1600UTC 30 OCT 2024

SEOUL/Incheon Intl(RKSI)
ILS or LOC RWY 34L
CAT II & III

AERONAUTICAL DATA TABULATION

ILS/LOC Approach to RWY 34L from PAMBI to KAGOK(IF)		
Fix / Point	Coordinates	
PAMBI(IAF)	37°10'54.3"N	126°32'34.4"E
KAGOK(IF)	37°13'43.8"N	126°37'34.2"E

ILS/LOC Approach to RWY 34L from ENPIL to KAGOK(IF)		
Fix / Point	Coordinates	
ENPIL(IAF)	37°09'39.0"N	126°43'34.0"E
DY019(SDF)	37°11'12.0"N	126°39'48.0"E
KAGOK(IF)	37°13'43.8"N	126°37'34.2"E

ILS/LOC Approach to RWY 34L from KAGOK(IF) to MAHF		
Fix / Point	Coordinates	
LENBI(SDF)	37°17'27.8"N	126°34'16.1"E
BODEK(FAF) BRG 333.20°/4.89 NM IRFN	37°22'37.3"N	126°29'41.9"E
D1.0 IRFN (MAPt LOC ONLY) BRG 333.20°/1.00 NM IRFN	37°25'48.0"N	126°26'52.4"E
WNG VOR/DME	37°25'58.6"N	126°27'00.0"E
THR RWY 34L	37°26'28.50"N	126°26'16.45"E
IRFN DME	37°26'34.7"N	126°26'04.9"E
Climb to 500 ft HDG 333	-	
D7 WNG HDG 288	-	
PY980 BRG 240.30°/13.00 NM WNG	37°17'58.7"N	126°14'09.0"E

**INSTRUMENT
APPROACH
CHART - ICAO**

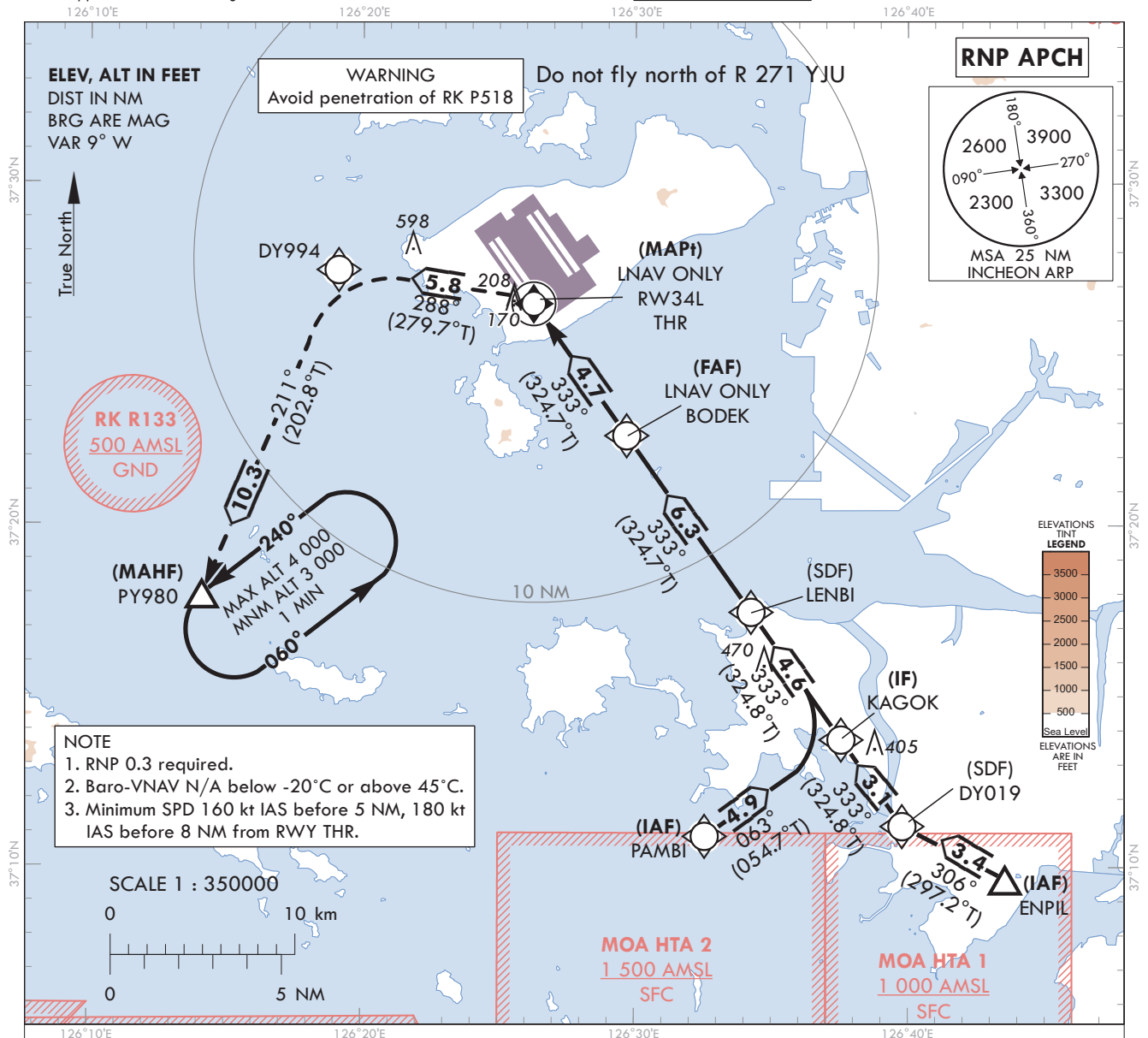
Note : Approach under ICAO Flight Procedures.

AERODROME ELEV 23 ft
HEIGHTS RELATED TO
THR RWY 34L - ELEV 23 ft

SEOUL APP 119.75
121.35
INCHEON TWR 118.2
118.8

SEOUL/Incheon Intl(RKSI)

RNP RWY 34L



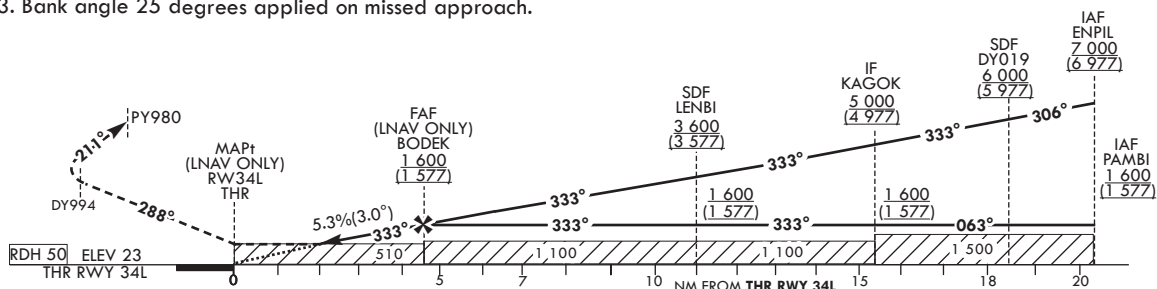
MISSSED APPROACH

Climb to 3 000 ft. Track to DY994, PY980. Hold as published.

NOTE

1. Missed approach turn limited to 220 kt IAS maximum.
2. Missed approach climb gradient of 3.0% for ATC purpose.
3. Bank angle 25 degrees applied on missed approach.

TRANSITION ALT 14 000
TRANSITION LVL FL 140



OCA (H)		A	B	C	D							
Straight-in Approach	LNAV/VNAV	430 (407)				Rate of descent	Knots V/V fpm	60 324	90 486	120 647	150 809	180 971
	LNAV	510 (487)				* Timing Not authorized for defining the MAPt. * Circling Not authorized.						

Change : Information of landing minima(OCA(H)).

SEOUL/Incheon Intl(RKSI)
RNP RWY 34L

AERONAUTICAL DATA TABULATION

Instrument Approach Procedure Coding Tables

RNP RWY 34L - via PAMBI to PY980(MAHF)

Serial Number	Path Descriptor	Waypoint Identifier	Fly-over	Course/Track °M(°T)	Distance (NM)	Turn direction	Altitude (ft)	Speed (kt)	Coordinates	VPA/ RDH	Navigation specification	Remarks
001	IF	PAMBI	-	-	-	-	+1 600	-	37°10'54.3"N 126°32'34.4"E	-	RNP APCH	IAF
002	TF	KAGOK	-	063 (054.7)	4.9	-	+1 600	-	37°13'43.8"N 126°37'34.2"E	-	RNP APCH	IF
003	TF	LENBI	-	333 (324.8)	4.6	-	+1 600	-	37°17'27.8"N 126°34'16.1"E	-	RNP APCH	SDF
004	TF	BODEK	-	333 (324.7)	6.3	-	+1 600	-	37°22'37.3"N 126°29'41.9"E	-	RNP APCH	FAF
005	TF	RW34L	Y	333 (324.7)	4.7	-	+510	-	37°26'28.50"N 126°26'16.45"E	-3.05/50	RNP APCH	MAPt
006	TF	DY994	-	288 (279.7)	5.8	-	-	-220	37°27'26.9"N 126°19'07.5"E	-	RNP APCH	Bank Angle 25°
007	TF	PY980	Y	211 (202.8)	10.3	-	+3 000	-220	37°17'58.7"N 126°14'09.0"E	-	RNP APCH	MAHF
008	HM	PY980	Y	240 (231.3)	-	L	-4 000 +3 000	-	37°17'58.7"N 126°14'09.0"E	-	RNP APCH	1 min (Outbound timing)

RNP RWY 34L - via ENPIL(IAF) to PY980(MAHF)

Serial Number	Path Descriptor	Waypoint Identifier	Fly-over	Course/Track °M(°T)	Distance (NM)	Turn direction	Altitude (ft)	Speed (kt)	Coordinates	VPA/ RDH	Navigation specification	Remarks
001	IF	ENPIL	-	-	-	-	+7 000	-	37°09'39.0"N 126°43'34.0"E	-	RNP APCH	IAF
002	TF	DY019	-	306 (297.2)	3.4	-	+6 000	-	37°11'12.0"N 126°39'48.0"E	-	RNP APCH	SDF
003	TF	KAGOK	-	333 (324.8)	3.1	-	+5 000	-	37°13'43.8"N 126°37'34.2"E	-	RNP APCH	IF
004	TF	LENBI	-	333 (324.8)	4.6	-	+3 600	-	37°17'27.8"N 126°34'16.1"E	-	RNP APCH	SDF
005	TF	BODEK	-	333 (324.7)	6.3	-	+1 600	-	37°22'37.3"N 126°29'41.9"E	-	RNP APCH	FAF
006	TF	RW34L	Y	333 (324.7)	4.7	-	+510	-	37°26'28.50"N 126°26'16.45"E	-3.05/50	RNP APCH	MAPt
007	TF	DY994	-	288 (279.7)	5.8	-	-	-220	37°27'26.9"N 126°19'07.5"E	-	RNP APCH	Bank Angle 25°
008	TF	PY980	Y	211 (202.8)	10.3	-	+3 000	-220	37°17'58.7"N 126°14'09.0"E	-	RNP APCH	MAHF
009	HM	PY980	Y	240 (231.3)	-	L	-4 000 +3 000	-	37°17'58.7"N 126°14'09.0"E	-	RNP APCH	1 min (Outbound timing)

**INSTRUMENT
APPROACH
CHART - ICAO**

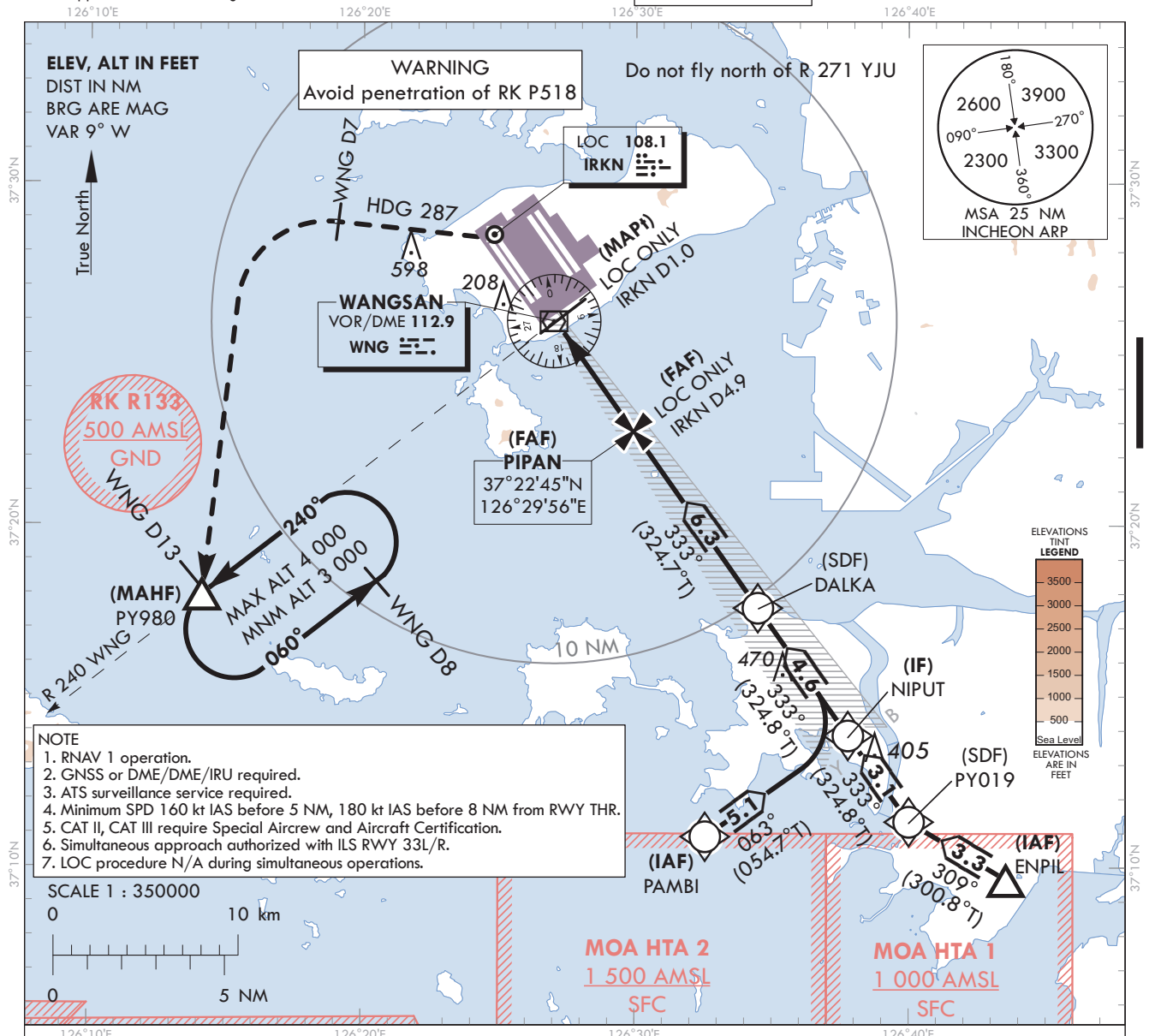
Note : Approach under ICAO Flight Procedures.

AERODROME ELEV 23 ft
HEIGHTS RELATED TO
THR RWY 34R - ELEV 23 ft

SEOUL APP	119.75
	121.35
INCHEON TWR	118.2
	118.8

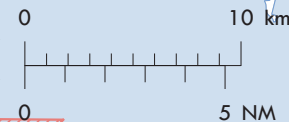
SEOUL/Incheon Intl(RKSI)

ILS or LOC RWY 34R
CAT II & III



- NOTE**
1. RNAV 1 operation.
 2. GNSS or DME/DME/IRU required.
 3. ATS surveillance service required.
 4. Minimum SPD 160 kt IAS before 5 NM, 180 kt IAS before 8 NM from RWY THR.
 5. CAT II, CAT III require Special Aircrew and Aircraft Certification.
 6. Simultaneous approach authorized with ILS RWY 33L/R.
 7. LOC procedure N/A during simultaneous operations.

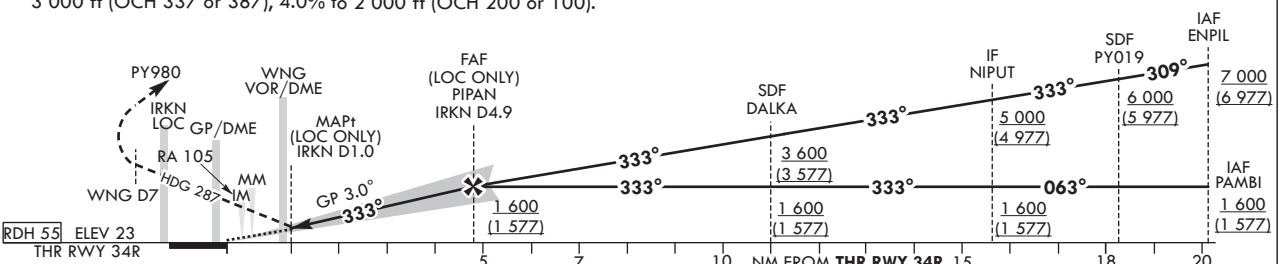
SCALE 1 : 350000



RECOMMENDED PROFILE(LOC ONLY)	DME IRKN	4	3	2
Final Approach Gradient 5.30%, 322 ft/NM	ALT(HGT)	1 310 (1 287)	988 (965)	666 (643)

TRANSITION ALT 14 000
TRANSITION LVL FL 140

- NOTE**
1. Missed approach turn limited to 210 kt IAS maximum.
 2. Missed approach minimum climb gradient of 2.5% to 3 000 ft (OCH 337 or 387), 4.0% to 2 000 ft (OCH 200 or 100).



OCA (H)	A	B	C	D
Straight-in Approach	CAT-I (CG 2.5%)	360 (337)		
	CAT-I (CG 4.0%)	223 (200)		
	LOC	410 (387)		
	CAT II	123 (100)		
	CAT III	-		

MISSED APPROACH

Fly RWY heading, climb to 3 000 ft. At 500 ft, turn left heading 287. At WNG 7 DME, turn left direct to PY980. Hold as published. Do not turn before passing MAPt.

* Timing Not authorized for defining MAPt.
* Circling Not authorized.

Change : Information of PIPAN(LOC ONLY).

OFFICE OF CIVIL AVIATION

AIRAC AIP AMDT 1/25
Effective : 1600UTC 19 FEB 2025

SEOUL/Incheon Intl(RKSI)
ILS or LOC RWY 34R
CAT II & III

AERONAUTICAL DATA TABULATION

ILS/LOC Approach to RWY 34R from PAMBI to NIPUT(IF)	
Fix / Point	Coordinates
PAMBI(IAF)	37°10'54.3"N 126°32'34.4"E
NIPUT(IF)	37°13'51.5"N 126°37'47.9"E

ILS/LOC Approach to RWY 34R from ENPIL to NIPUT(IF)	
Fix / Point	Coordinates
ENPIL(IAF)	37°09'39.0"N 126°43'34.0"E
PY019(SDF)	37°11'20.4"N 126°40'01.2"E
NIPUT(IF)	37°13'51.5"N 126°37'47.9"E

ILS/LOC Approach to RWY 34R from NIPUT(IF) to MAHF	
Fix / Point	Coordinates
DALKA(SDF)	37°17'35.6"N 126°34'29.8"E
PIPAN(FAF LOC ONLY) BRG 333.34°/4.89 NM IRKN	37°22'45.1"N 126°29'55.6"E
D1.0 IRKN(MAPt LOC ONLY) BRG 333.34°/1.00 NM IRKN	37°25'55.7"N 126°27'06.3"E
WNG VOR/DME	37°25'58.6"N 126°27'00.0"E
THR RWY 34R	37°26'36.29"N 126°26'30.21"E
IRKN DME	37°26'42.5"N 126°26'18.8"E
Climb to 500 ft HDG 333	-
D7 WNG HDG 287	-
PY980 BRG 240.75°/13.00 NM WNG	37°17'58.7"N 126°14'09.0"E

Change : Information of PIPAN(LOC ONLY).

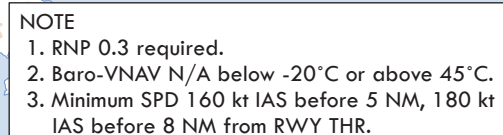
AERODROME ELEV 23 ft
HEIGHTS RELATED TO
THR RWY 34R - ELEV **23 ft**

SEOUL	APP	119.75
		121.35
INCHEON	TWR	118.2
		118.8

SEOUL/Incheon Intl(RKSI)

RNP RWY 34R

Note : Approach under ICAO Flight Procedures.

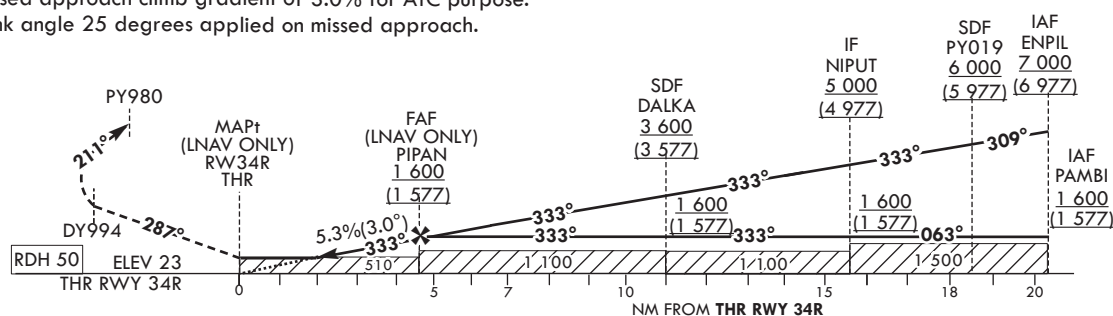


Climb to 3 000 ft. Track to DY994, PY980. Hold as published.

NOTE

1. Missed approach turn limited to 220 kt IAS maximum.
2. Missed approach climb gradient of 3.0% for ATC purpose.
3. Bank angle 25 degrees applied on missed approach.

TRANSITION ALT	14 000
TRANSITION LVL	FL 140



OCA (H)		A	B	C	D							
Straight-in Approach	LNAV/VNAV	430 (407)				Rate of descent	Knots	60	90	120	150	180
						V/V fpm	324	486	647	809	971	
	LNAV	510 (487)				* Timing Not authorized for defining MAPt. *Circling Not authorized.						

Change : Information of landing minima(OCA(H)).

SEOUL/Incheon Intl(RKSI)
RNP RWY 34R

AERONAUTICAL DATA TABULATION

Instrument Approach Procedure Coding Tables

RNP RWY 34R - via PAMBI(IAF) to PY980(MAHF)

Serial Number	Path Descriptor	Waypoint Identifier	Fly-over	Course/Track °M(°T)	Distance (NM)	Turn direction	Altitude (ft)	Speed (kt)	Coordinates	VPA/ TCH	Navigation specification	Remarks
001	IF	PAMBI	-	-	-	-	+1 600	-	37°10'54.3"N 126°32'34.4"E	-	RNP APCH	IAF
002	TF	NIPUT	-	063 (054.7)	5.1	-	+1 600	-	37°13'51.5"N 126°37'47.9"E	-	RNP APCH	IF
003	TF	DALKA	-	333 (324.8)	4.6	-	+1 600	-	37°17'35.6"N 126°34'29.8"E	-	RNP APCH	SDF
004	TF	PIPAN	-	333 (324.7)	6.3	-	+1 600	-	37°22'45.1"N 126°29'55.6"E	-	RNP APCH	FAF
005	TF	RW34R	Y	333(324.7)	4.7	-	+510	-	37°26'36.29"N 126°26'30.21"E	-3.05/50	RNP APCH	MAPt
006	TF	DY994	-	287(278.2)	5.9	-	-	-220	37°27'26.9"N 126°19'07.5"E	-	RNP APCH	Bank Angle 25°
007	TF	PY980	Y	211(202.8)	10.3	-	+3 000	-220	37°17'58.7"N 126°14'09.0"E	-	RNP APCH	MAHF
008	HM	PY980	Y	240(231.3)	-	L	-4 000 +3 000	-	37°17'58.7"N 126°14'09.0"E	-	RNP APCH	1 min (Outbound timing)

RNP RWY 34R - via ENPIL(IAF) to PY980(MAHF)

Serial Number	Path Descriptor	Waypoint Identifier	Fly-over	Course/Track °M(°T)	Distance (NM)	Turn direction	Altitude (ft)	Speed (kt)	Coordinates	VPA/ TCH	Navigation specification	Remarks
001	IF	ENPIL	-	-	-	-	+7 000	-	37°09'39.0"N 126°43'34.0"E	-	RNP APCH	IAF
002	TF	PY019	-	309 (300.8)	3.3	-	+6 000	-	37°11'20.4"N 126°40'01.2"E	-	RNP APCH	SDF
003	TF	NIPUT	-	333 (324.8)	3.1	-	+5 000	-	37°13'51.5"N 126°37'47.9"E	-	RNP APCH	IF
004	TF	DALKA	-	333 (324.8)	4.6	-	+3 600	-	37°17'35.6"N 126°34'29.8"E	-	RNP APCH	SDF
005	TF	PIPAN	-	333 (324.7)	6.3	-	+1 600	-	37°22'45.1"N 126°29'55.6"E	-	RNP APCH	FAF
006	TF	RW34R	Y	333(324.7)	4.7	-	+510	-	37°26'36.29"N 126°26'30.21"E	-3.05/50	RNP APCH	MAPt
007	TF	DY994	-	287(278.2)	5.9	-	-	-220	37°27'26.9"N 126°19'07.5"E	-	RNP APCH	Bank Angle 25°
008	TF	PY980	Y	211(202.8)	10.3	-	+3 000	-220	37°17'58.7"N 126°14'09.0"E	-	RNP APCH	MAHF
009	HM	PY980	Y	240(231.3)	-	L	-4 000 +3 000	-	37°17'58.7"N 126°14'09.0"E	-	RNP APCH	1 min (Outbound timing)